

County Wicklow - Ireland

2012

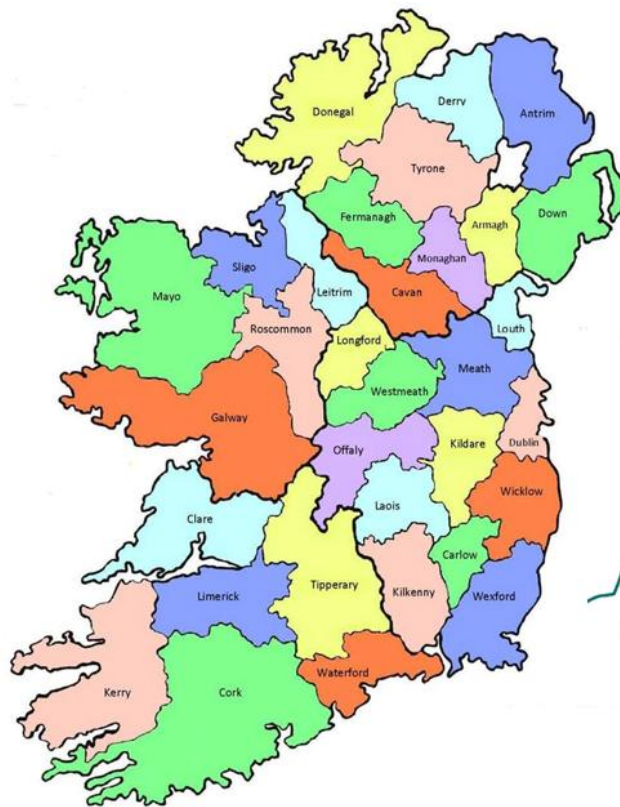
The International Awards for Liveable Communities



Category C –
Population up to 150,000

We strive for County Wicklow to be a cohesive community of people enjoying distinct but interrelated urban and rural environments; where natural surroundings and important resources are protected; where opportunities abound to live and work in a safe atmosphere, allowing people to enjoy the benefits of well paid jobs, a variety of housing choices, excellent public services, ample cultural and leisure opportunities, and a healthy environment.

(Core Vision: Wicklow County Development Plan 2010-2016)



Introduction

The County of Wicklow is situated on the East Coast of Ireland. It occupies an area of 2,027 square kilometres and is a county of contrasts in terms of its landscape and structure. It is part of the Greater Dublin Region and is, therefore, subject to many of the pressures that come from the expansion of the capital city. At the same time it is also known as 'The Garden of Ireland', which suggests an ideal place that is rural and unspoilt in character. It is the 17th largest of Ireland's thirty two counties by area and 17th largest by population. It is the fourth largest of Leinster's twelve counties by size and the fifth largest in terms of population. The population of Wicklow as per census 2011 is 136,640 an increase of 10.1% on the previous census in 2006 (126,194)

The landscape of Co. Wicklow is one of mountains, rolling foothills, forests, coastline and lakes, all with attractive views. Wicklow Mountains National Park, one of six national parks in Ireland, covers a total area of 15,700 hectares which is almost 8% of the county's land mass. The spine of a granite mountain range runs in a Northeast to Southwest direction across the county and forms one of the most extensive areas of continuous upland terrain in Ireland.

The county has a remarkably varied topography, ranging from seashore with long sandy beaches, to marsh and bogland, rivers and lakes, rolling valleys and high mountain ranges. It has an ancient heritage, archaeological sites and places of historical interest.

The “functional areas” of Co. Wicklow are divided with a rural/urban contrast. The existing patterns of development have been influenced by the location of key items of infrastructure and a settlement pattern that has evolved over centuries. In recent times the dominant influence has been the increased commuting by the population overspill from Dublin. Therefore development is at its most intense around Dublin and along the two main transport corridors of the M11/N11 and the N81.



Vartry River : Co Wicklow



Resource Information

Wicklow County Council:

www.wicklow.ie

Includes all development plans, strategic plans, Arts, Heritage, Environment, Community, Recreational & Social Inclusion Plans

Wicklow Tourism:

www.visitwicklow.ie

Wicklow Community website:

www.thewicklowway.ie

County Wicklow Partnership

www.wicklowpartnership.ie

Maps Courtesy of:

County Development Plan 2010-2016

Submission Contact Details:

Cllr. Gráinne Mc Loughlin hdp, MA

Wilfield

Leabeg Middle

Newcastle

Co Wicklow

mcloughlingrainne@gmail.com

00353 (0) 86 8329686

Enhancement of the Natural & Built Landscapes



1. Enhancement of the Natural & Built Landscapes

Co. Wicklow, more than most Irish counties, owes its topography to the Ice Age. The last major Irish glacial period extended from about 70,000 years before the present to about 10,000 years ago. During this period of time the ice cap reached a thickness of over 1,000 meters.



Vartry Pump House

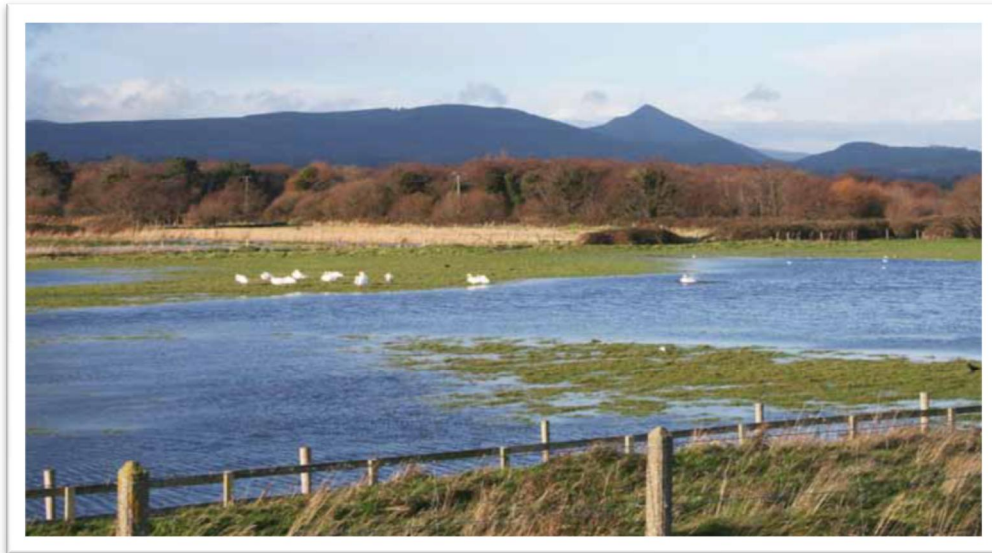
The gradual receding of the ice cap created the geography of the present day Wicklow comprising glacial valleys, mountain lakes and conies such as Glenmalure, Glenmacnass and cirques. The melting ice in the valleys deposited great heaps of rocks and debris blocking the escape of the corrie lakes.

After the ice age ended and the temperature started to rise, Ireland changed to forest and vegetation. By 6,000 years ago Wicklow was heavily forested with hazel, oak, elm etc. Wicklow supports an excellent diversity of natural and semi natural habitats such as marine, coastal, wetland, woodland, lake, river and upland environments that in turn support a wide range of wild plant and animal species. This biodiversity provides intrinsic economic and social benefits for the County and contributes greatly to quality of life, recreational, amenity and tourism value.

County Wicklow has one National Park, 14 Special Areas of Conservation (SAC), 34 (proposed) Natural Heritage Areas (NHAs), 4 Special Protection Areas (SPA), and 6 Nature Reserves



Lough Tay ©Wicklow Tourism



The Murrough - East Coast Nature Reserve is an important coastal wetland complex containing woodland, fen, freshwater and brackish marshes and shingle beach habitats. Photo: Birdwatch Ireland

Guide to BirdWatch Ireland's East Coast Nature Reserve
A Natura 2000 site - a wetland of international significance

The East Coast Nature Reserve (ECNR)
The East Coast Nature Reserve is a Special Protection Area (SPA) and a Natura 2000 site. It is an important site for the conservation of birds and other wildlife. The reserve is located in the east of Ireland, near the town of Drogheda. It is a wetland of international significance, and it is home to a wide range of bird species, including many rare and endangered species. The reserve is also home to a variety of other wildlife, including mammals, reptiles, and amphibians. The reserve is managed by the Department of the Environment, Heritage and Local Government, and it is open to the public for recreation and education.

A watery wilderness
Although the area is relatively small, it still manages to contain the breeding of a potential world. 150+ birds and waders abound. Ring-necked pheasant, woodcock, and the ever-present golden-crowned woodpecker are just a few of the species that can be seen here.

Rare birds on the reserve
The Black-throated Green is a rare bird species that is found in the reserve. It is a small, green bird with a black throat and a yellow breast. It is found in the reserve in small numbers, and it is considered to be a rare species. Other rare birds found in the reserve include the Marsh Wren, the Red-throated Diver, and the Common Noddy.

A wildlife spectacle
A great diversity of wildlife can be seen on the reserve. A multitude of different birds, as well as other species such as frogs, dragonflies, and butterflies, can be seen here. The reserve is also home to a variety of other wildlife, including mammals, reptiles, and amphibians. The reserve is a great place to see a wide range of wildlife, and it is a great place to learn about the natural world.

Dragonflies and butterflies: winged jewels
Dragonflies and butterflies are some of the most beautiful creatures to see in the reserve. They are colorful and graceful, and they are a great sight to see. The reserve is a great place to see a wide range of dragonflies and butterflies, and it is a great place to learn about the natural world.

Access to the Reserve
The reserve is accessible by car, and there are several parking areas. There are also several walking routes, and there are several information points. The reserve is open to the public, and it is a great place to see a wide range of wildlife. The reserve is managed by the Department of the Environment, Heritage and Local Government, and it is open to the public for recreation and education.

The Kerry Bog Pony: a rare native breed
The Kerry Bog Pony is a rare native breed of horse. It is a small, sturdy horse with a thick coat and a long neck. It is found in the reserve in small numbers, and it is considered to be a rare species. The Kerry Bog Pony is a great sight to see, and it is a great place to learn about the natural world.

Other
There are several other species of birds and other wildlife found in the reserve. These include the Marsh Wren, the Red-throated Diver, and the Common Noddy. The reserve is a great place to see a wide range of wildlife, and it is a great place to learn about the natural world.

Map and Information
The map shows the location of the reserve and the various walking routes. It also shows the location of the parking areas and the information points. The information points provide details about the reserve and the various species found there. The map is a great tool for visitors, and it is a great place to learn about the natural world.

East Coast Nature Reserve – Visitor Guide

The conservation and enhancement of biodiversity ensure the suitable and sustainable protection of designated habitats, the linkages between natural sites (whether they are natural or man-made) and the range of species in the ecosystem.

Table 1: Characteristic of Landscapes – Placed in hierarchy



Woodlands, trees and hedgerows are important natural habitats and groups and lines of trees/hedgerows are important wildlife corridors. Woodlands and trees have an amenity function, providing not only important recreational areas but also adding to the overall beauty of the County.



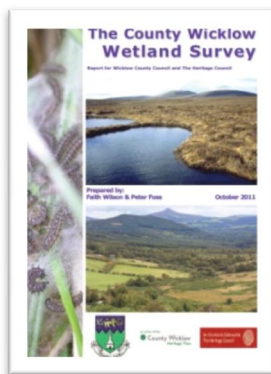
A sizeable proportion of the forestry estate in Wicklow consists of the remains of old demesne planting.

Current Work in Biodiversity in Wicklow:

County Wicklow produced its first Biodiversity plan in 2010 (2012-2015). This Plan offers an integrated, partnership approach to protecting and managing the natural heritage of Wicklow over a five year period. As a county, Wicklow is richly endowed with a beautiful natural landscape and this landscape brings many benefits for both residents and visitors, but it is recognised that it is something that needs to be carefully managed to insure that these benefits can be enjoyed into the future. There are many agencies, organisations and individuals that already do a great deal to help biodiversity in the county and it would not be possible to list all of these and the work that they do. However, they include statutory and non-statutory agencies led by the County Heritage Officer and her team working in Wicklow County Council. The voluntary sector plays a huge part in the preservation of the landscapes and conservation in Wicklow and contributed to the plan through a consultation phase, submissions and discussion groups.

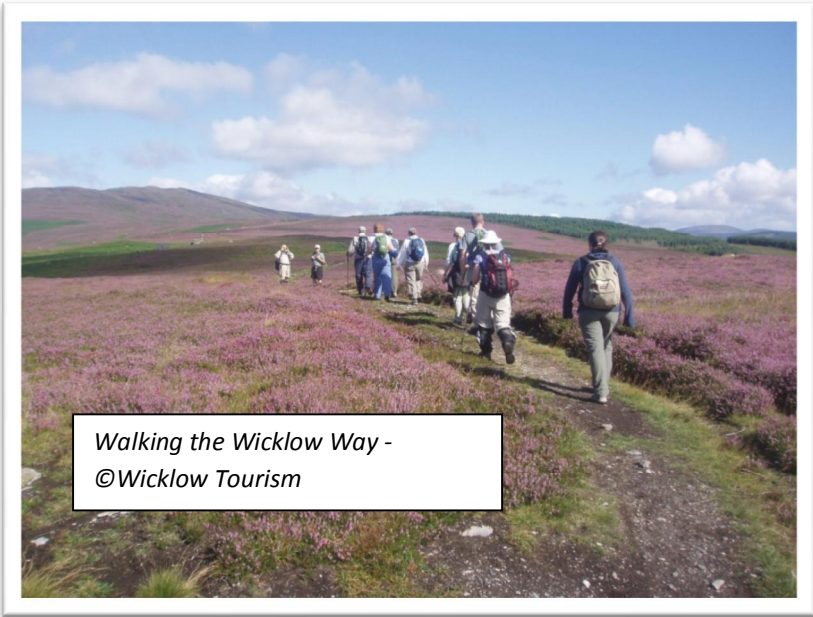
Issue	Action needed	Review period
Monitoring of Actions	Summary report from partners	Annual
Review of Actions	Audit of achievement of objectives and current issues	5 years
Review of Species Lists	Full review of lists ensuring compliance with national guidance and local status changes	5 years
	Update of lists in response to known issues	Annual
Review of Action Plan	Full audit of plan, actions achieved and formulation of new plan	5 years

Table 3: Review action plan for the Wicklow Biodiversity Plan



The County Wicklow Wetland Survey 2011 Project

The project created a digital GIS wetlands map and database of known and potential freshwater and coastal wetland sites in County Wicklow. The habitats include lakes, ponds, watercourses, springs, swamps, wet grassland, marsh, bogs, fens, lagoons, dune slacks, salt marsh, bog woodland, riparian woodland and wet woodland. In all, 34 wetland habitat types were mapped, 8 of which are listed as priority habitats in the EU Habitats Directive



*Walking the Wicklow Way -
©Wicklow Tourism*

Recreation use of natural resources : Wicklow is committed to ensuring sustainable recreational use of the outdoors in County Wicklow in accordance with the objectives of the County Wicklow Outdoor Recreational Strategy 2009-2013. Natural areas provide opportunities for passive and active activities such as biking, swimming, fishing and sailing / wind surfing



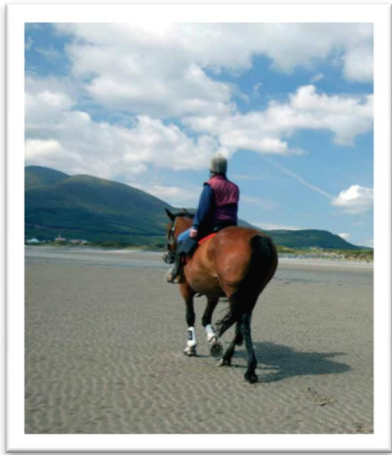
Wicklow Coastline - © Bloomin lovely cards



Wicklow Lighthouse/ Round Ireland Yacht Race



Wicklow Bike Challenge © Wicklow Tourism



Outdoor equestrian sports

The Wicklow County Development Plan 2010-2016 includes objectives from the National Planning & Development Act (2000), EU Habitats Directive, Water Framework Directive 2000, Groundwork Directive 2006 and National Biodiversity Plan 2002 that includes

“The conservation and protection of the environment including, in particular the archaeological and natural heritage and the conservation of European sites and any other sites which may be prescribed.”



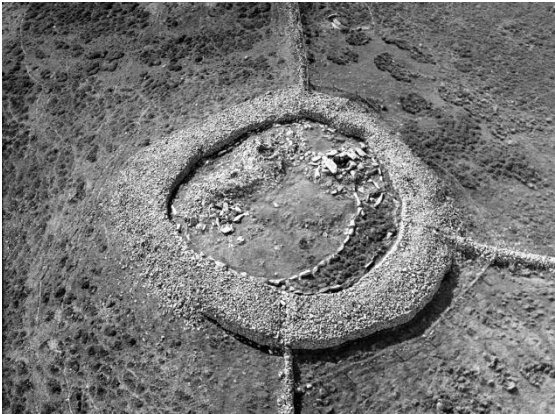
Built Landscapes:
County Wicklow is rich in built heritage, having been a location of early and monastic settlement, of wealth and position in the Georgian era, of rebellion and of mining activity.

Glendalough (*Gleann Dá Loch, meaning "Glen of Two Lakes"*) is a glacial valley located in County Wicklow renowned for its Early Medieval monastic settlement founded in the 6th century by St Kevin, a hermit priest, and destroyed in 1398 by English troops.

This is reflected in the abundance of archaeological sites and monuments ranging from Early Bronze age right through to Christian and Medieval eras, large country houses, planned estate villages, Georgian townhouses and other vernacular structures as well as bridges, harbours, stone walls and structures associated with the County’s mining and industrial heritage. These have all been protected & new development in the vicinity involves strict guidelines, procedures and design.



Russborough House - Blessington



Baltinglass Passage Tomb – South Wicklow

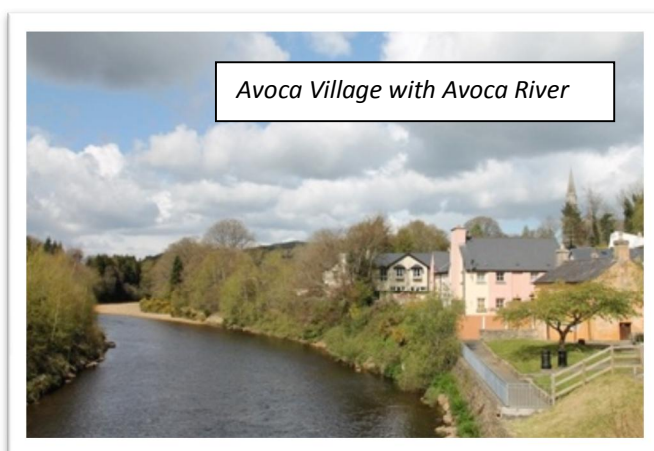
It is worth noting that the management of the landscapes – both natural and built is a partnership between authorities, community groups, landowners and the general public who work together. There is no aspect of Wicklow landscapes that can be accredited to any authority fully as the community involvement is the reason why the county’s beauty has been preserved.



Our archaeological heritage includes structures, constructions, groups of buildings, developed sites, moveable objects and monuments of other kinds, as well as their context, whether situated on land or under water. In this respect, Wicklow has a significant archaeological heritage, which provides a valuable cultural, educational and tourism resource. The Baltinglass hillfort complex and Rathgall hillfort in south Wicklow are notable monuments of national importance, while Glendalough Monastic Settlement has been proposed for the tentative list as a UNESCO World Heritage Site due to its international significance.



Urban Settlements: All of Wicklow’s larger settlements still have at their core a traditional two - three storey ‘main street’ where most economic activity is concentrated, with the larger settlements having developed ‘satellite’ economic centres, normally in the form of new neighbourhood retail centres in housing expansion areas.



While a high proportion of Wicklow residents live outside towns, the counties towns are the lifeblood of the County, meeting all or some of the employment, retail, cultural and social needs of all residents. The County settlement strategy sets out a hierarchy of towns from ‘metropolitan’ to ‘small’ but they will all fulfil similar functions depending on their size and catchment, and services on offer.

It is the policy of the town planners that investment in towns and urban settlements gives the highest return to society, as economies of scale can be achieved and the highest standards of environmental protection can be achieved.

Within these guidelines strict criteria, dealing with design, layout, visual integration and physical connectivity with the area surrounding the site is required to be at the fore of any design model. While the format and design should complement the prevailing pattern of development in the area and should not degrade the residential or visual amenities already enjoyed in the area, new developments meet the highest standards of modern layout and design even if this means a development that is very different from its surroundings. Appropriate consideration of local setting and context is taken into consideration in particular where there are Architectural Conservation Areas



The core town centre area, which is usually the historic core, will normally be zoned 'town centre', which allows for a wide range and mix of uses. Regardless of the type of site, new development shall generally follow the pattern of development in that area, with regard to building form, massing, height and design features.

Meridian Point – Greystones (off street retail centre) with direct & open access to Main Street

Open Space Policies: Specific policies are applicable to streetscapes & street furniture. Open space shall be provided in all new developments equivalent to 5% of the building gross floor area; all applications for large-scale residential expansion areas must include a community facilities audit and

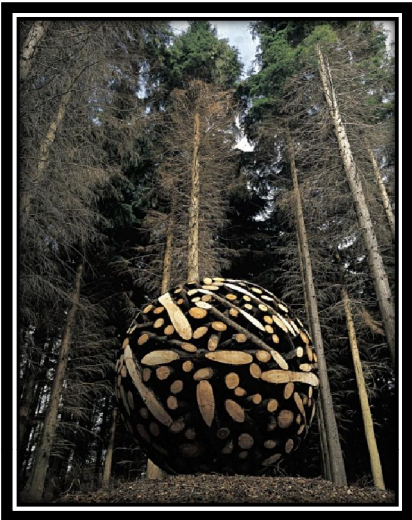


where facilities are found to be inadequate, proposals to address these deficiencies must be included in the planning application – this would include, community centres, sports facilities, youth café's etc.

Running track, Skate Park and Sports Development – Developers contribution to a new development in North Wicklow Opened 2008

Street Art: Although Wicklow is experiencing a recession as with the rest of the country, It has been relatively unscathed from the massive developments that happened in other parts of the country due to very tight planning laws. Throughout the country on Roads, villages, towns and scenic routes, public art is evident. This was as a result of a percent for art scheme, which ensured that a 1% levy on all developments went into public art – this scheme was managed from the County Arts Office and has given the County some magnificent pieces of art in both very public and obscure spaces

Examples of Wicklow Street Art



Arts Culture and Heritage



2. Arts Culture & Heritage



The history of County Wicklow is a microcosm of so much of Irish history. From the early Celtic invasions County Wicklow has seen it all. It is sometimes known as 'the last county' as it was the last of the original counties to be established in 1606 from land previously part of Counties Dublin and Carlow which then ran to the sea and included Arklow. From the ancient monastic ruins at Glendalough to the stately homes at Russborough, Avondale, Kilruddery and Powerscourt the county's history is evident throughout.

These beautiful stately homes are open to the community in Wicklow with events held all year round. Some examples include:



Avondale House & Park – The Synge Summer School – A three day conference/seminar on cultural topics



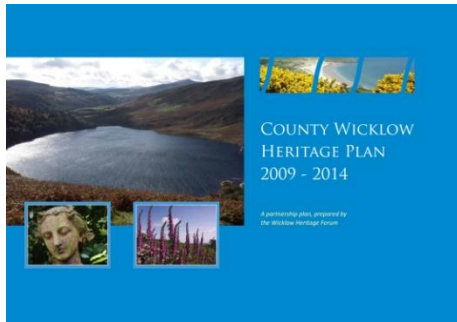
Powerscourt House & Gardens - Hosts Picnic under the Stars & 'A midsummers Night Dream'



Russborough House & Gardens – Hosts Culture Night in Wicklow, exhibitions & Music Evenings



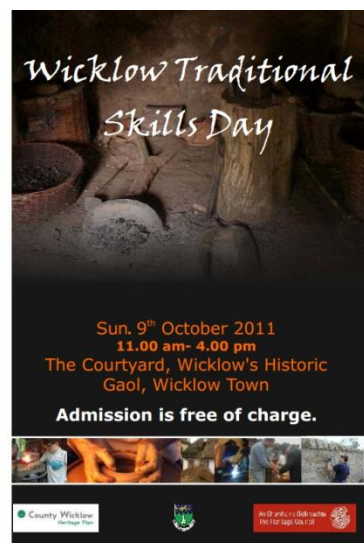
Kilruddery House & Gardens – Hosts Film and Children's Festivals & Recitals, workshops and concerts.



The County Wicklow Heritage Plan 2009-2014 sets out the overall strategy and specific actions. Its overall aim is to.... ***“To conserve the natural, built and cultural heritage of the county and to increase awareness and enjoyment of it among all in Wicklow”*** This was achieved through public consultation – 2 phases, public meetings and working groups.

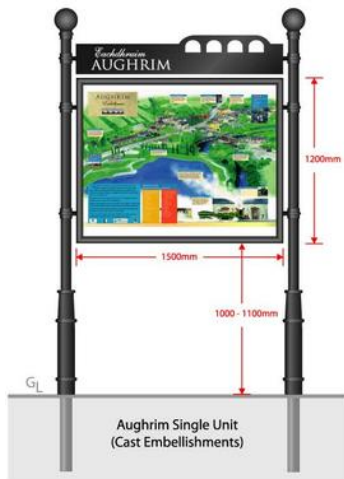
Wicklow has a dedicated Heritage Officer and together with the community plays a vital part in the substantial participation of the community in our heritage & culture; some of the ways this is done is as follows:

- Heritage newsletter with public events & training courses. Using local authorities website and local media
- Developed Heritage Boards at a selection of key community venues throughout the county, at which members of the public can access information
- Supports the production of an index of historical sources for County Wicklow to support historical research efforts and includes in this index, local journals, research projects, publications and other archival sources and relevant contacts
- Organises open heritage days whereby selected buildings, normally not publicly accessible are opened to the public for a specified time
- Works with the library service to make relevant heritage collections accessible to the public online
- Makes the most of opportunities offered by Heritage Week to promote to the fullest the heritage of County Wicklow & encourages active participation by community groups and members of the public
- Promotes traditional skills in Wicklow & provides opportunities to showcase practitioners within the county



- Develops an annual themed school education project/ competition in the area of heritage every year

- Developed an agreed approach to heritage interpretation for the villages with the Wicklow Uplands and community consultations



Village interpretative panel

WICKLOW HERITAGE WEEK EVENTS DAILY TIMETABLE – Saturday 20th August to Sunday 28th August 2011 (inclusive)									
EVENT	Sat 20	Sun 21	Mon 22	Tue 23	Wed 24	Thu 25	Fri 26	Sat 27	Sun 28
Meet the Genealogist: Advice on Starting Your Family History Research. Blessington Library. wh@eircom.net T: 0404 20126 P W FREE	9-5pm								
Guided Tours of Rathgall Hillfort. Meet at Rathwood, Rath, Tullow. info@rathwood.com T: 059 9156285 € P	2-4pm	2-4pm	2-4pm	2-4pm	2-4pm	2-4pm	2-4pm	2-4pm	
Historical Talk at Wicklow Gaol, Wicklow Town. tara@wicklowhistorical.org T: 0404 61599 P W P FREE	1-2pm	1-2pm							
Wise Ways at the Maze. Greenan Farm Museum & Maze. € W P	10am-6pm	10am-6pm	10am-6pm	10am-6pm	10am-6pm	10am-6pm	10am-6pm	10am-6pm	
The Hollywood Fair. hollywoodfair@gmail.com T: 085 1342676 € W P	2-11pm	6-11pm							
Guided walks of the Wild Flower Meadows at Kilmacurragh Botanic Gardens, Kibride, Wicklow. botanicgardens@opw.ie T: 0404 48844 € W P FREE	2.30-3.30pm	2.30-3.30pm						2.30-3.30pm	2.30-3.30pm
Calary Church of Ireland Exhibit. (4.5km from Kilmacanogue off Roundwood road). dereke@eircom.net T: 01 2818118 € W P FREE	2-6pm	2-6pm						2-6pm	2-6pm
Woodlands Falconry and Birds of Prey Centre, Rathwood, Tullow. woodlandsfalconry@gmail.com T: 059 9168879 € W P	11am-5pm	11am-5pm	11am-5pm	11am-5pm	11am-5pm	11am-5pm	11am-5pm	11am-5pm	11am-5pm
Panell and his Family. Guided Tour of Avonville House, Rathdrum. jean.coville@coillte.ie T: 0404 46111 € W P	12-3pm								
Ballymurris 17th Century Quaker Farmhouse Guided Visit. (7km south of Wicklow Town). icon@kifree.ie T: 0404 48206 € W P	2-6pm	2-6pm	2-6pm	2-6pm	2-6pm	2-6pm	2-6pm	2-6pm	2-6pm
Glencree Peace Walk at Glencree Peace Centre (7 miles from Enniskerry). Martin.roe@glencree.ie T: 087 2853009 € W P	4-5pm	4-5pm						4-5pm	4-5pm
Story Telling at Tara's Palace Museum of Childhood, Powerscourt House, Enniskerry. Nicolaacornor1@gmail.com T: 086 8607068 € W P	2-3pm	2-3pm						2-3pm	2-3pm
Drawing from Nature with Yanny Peters at the Mermaid Centre, Bray. pr@mermaidcentre.ie T: 01 2724030. € W P	2.30-4.30pm								
Storytelling Pub Night. Meal and Music. Fitzgerald's Pub, Avoca. paul@avoca.com T: 086 8592320 € P	7.30-11.30pm								
Wicklow Coastal Groups Seminar: A Showcase of Community Involvement. Bridge Community Centre Arklow. agray@eusa.antsa.ie T: 087 6826934 € W P FREE	10-3pm								
Broadleough Loop Nature Walk. Meet at Murrugh Car Park, Wicklow Town. spencermalcolm@yahoo.com T: 087 2444587 P FREE	2-5pm								
Blessington Country Market. St. Kevin's Community Centre. monavallaband@gmail.com T: 045 897103. € W P	2.30-3.30pm							2.30-3.30pm	
North Wicklow Country Market. Community Centre, Newcastle. jackiegrm@gmail.com T: 086 8034237 € W P FREE	10.30am-12.30pm							10.30am-12.30pm	
Delgany Village Open Day & Heritage Trail. delganycommunitycouncil@gmail.com T: 01 2876689 W P FREE	2-5pm								
Meet the Genealogist: Advice on Starting Your Family History Research. Carnem Library. wh@eircom.net T: 0404 20126 W P FREE	6.30-8.30pm								
Spinning Wheel Demonstration at Arklow Methodist Church. jennifermjavanagh@eircom.net T: 085 8163392 (before 4pm) P FREE	8-9pm								
Wicklow's Living Coast Photography Exhibition, County Buildings, Wicklow Town. burns@wicklowco.ie T: 0404 20191. € W P FREE	9-5pm	9-5pm	9-5pm	9-5pm	9-5pm	9-5pm			
The Great Sea Serpent – an outdoor play. Parnell Bridge, Wicklow Town. info@wicklowwhostel.ie T: 0404 68126 € W P FREE	8-9pm							8-9pm	
If Trees could Talk. Talk by Dr. Michael Carey at Newcastle Community Centre. milianjohnston@eircom.net T: 087 2214533 W P FREE	8-10pm								
UCD Archaeological Field School Public Outreach – Upper Lake Glendalough Thomas.kador@ucd.ie T: 086 8295336 € W P FREE (charge to use car park)	10am-4pm	10am-4pm	10am-4pm	10am-4pm	10am-4pm	8am-8pm			
Bray before the Sat Nav – Historic maps of Wicklow. Bray Library, Eglinton Road. Bwhite_e@yahoo.com T: 01 2861287 W P FREE	7pm								
Trip from Arklow to Enniscorthy Castle, Arklow Train Station. jennifermjavanagh@eircom.net T: 085 8163392 (before 4pm) € W P €	8am-8.30pm								

EVENT	Sat 20	Sun 21	Mon 22	Tue 23	Wed 24	Thu 25	Fri 26	Sat 27	Sun 28
Guided Tours of Mount Usher Gardens. info@mountushergardens.ie T: 0404 40205 B W P €									11am & 2.30pm
Guided Tour of Old Burial Ground 7th Century, Delgany Village. eamadonbulkear@gmail.com T: 01 2876094 € FREE									11am-1pm
Newspapers of Yesterday: Wicklow's Past in Newsprint. Ballyvaughan Library, Bognal Rd, Bray. drennan@wicklowco.ie T: 01 2723205 P W FREE									7-8.30pm
Movie Trail of Wicklow-Kildare (Pick-ups a various venues to be arranged). paula@avoca.com T: 086 8592320 € B									9am-5pm
Dolls Houses and Miniaturisation Workshop, Tara's Palace Museum of Childhood, Powerscourt House, Enniskerry. Nicolaacornor1@gmail.com T: 086 8607068 € W P									12-3pm
Arklow Pottery Display at Arklow Methodist Church. jennifermjavanagh@eircom.net T: 085 8183392 (before 4 pm) P FREE									11am-4pm
Meet the Genealogist: Advice on Starting your Family History Research. Greystones Library. wh@eircom.net T: 0404 20126 P W FREE									11am-4pm
The Week that Was 1911. Talk at Bray Library, Eglinton Road. Jim Scannell T: 01 28823135 W P FREE									7pm
Meet Arklow Writers at Arklow Methodist Church. jennifermjavanagh@eircom.net T: 085 8183392 (before 4 pm) P FREE									11am-4pm
Photography Exhibition: Roundwood Through the Seasons. roundwoodstncc@eircom.net T: 01 2012882 € W P FREE									7-9pm
A Reveal in Blue: Life & Work of Harry Clarke. St. Edig's Church, Arklow. jennifermjavanagh@eircom.net T: 085 8183392 (before 4 pm) € W P FREE									8-9pm
IWT Wild Watch Walks: Buckrooney Blooms. Meet at entrance to Buckrooney Reserve, south of Brittas Bay. enquiries@wt.ie T: 01 8602839 B P FREE									3-4.30pm
Wild Child Walk. Meet at Old Schoolhouse, Roundwood. roundwoodstncc@eircom.net T: 01 2012882 P FREE									2-4pm
Felt Flower Day at The Yarnroom, Ashford (opposite Mount Usher Gardens). marta@theyarnroom.com T: 085 1303762 B P W									10.30am-4pm
Open Day Luaine Spirituality Centre, Killocoole. Aidenkasp@eircom.net T: 087 2158222 P FREE									2-4pm
The Coastal O'Donoghue Trail. Meet Bray Library, Eglinton Road. Bwhite_e@yahoo.com T: 01 2861287 € W P FREE									3-4pm
Bride's Head Cliff Walk. Meet at Dunbar Car Park, Wicklow Town. spencermalcolm@yahoo.com T: 087 2444587 P									2-5pm
Story-time Parent & Toddlers at Arklow Methodist Church. jennifermjavanagh@eircom.net T: 085 8183392 (before 4 pm) € W P FREE									2.30-3.30pm
The Ancient Copper and Sulphur Mines Of Avoca. Meet at White Bridge Tignoney. nicky@eircom.net T: 086 3726731 P FREE									3-5pm
Open Day At Wicklow Head Lighthouse, Wicklow Town. caroline@rislandmarket.com T: 01 6704733 P FREE									10am-4pm
A Short Play: The Last House. Glenmalur Youth Hostel (every 1/2 hour). panchord@eircom.net T: 087 6838738 € W P FREE									2.30-4.30pm
Wicklow Hidden Heritage Hill Walk. Meet at Lough Dan Scout Centre. cmurphy@wicklowuplands.ie T: 01 2188406 P FREE									11am-4pm

Full details of all events is available on www.heritageweek.ie Please note that the responsibility for hosting events lies with the event organiser and they should be contacted directly for event queries.

€ Event is suitable for children
 P Car parking available
 W Full wheelchair access
 W Partial wheelchair access
 B Advance booking needed
 € Admission fee applies

Wicklow Heritage Week – Programme of Events



Wicklow Festivals
 – Wicklow hosts a year round celebration of festivals and events for the whole community. All are managed by voluntary effort and are at the heart of celebrations within the County – In addition there

is at least one sports related festival in the county each month from Triathlons & Cycling to Trail Blazing, Mountaineering or walking.

Annual calendar of festivals 2012 – Table 4

Month	Name	Genre
January	Bray one Act Theatre Festival	Arts – Theatre
March	Kilruddery Film Festival	Arts-Film
	Arklow Music Festival (Féis)	Arts-Music
	Bray St Patrick’s Festival	Culture/Heritage
	St Patrick’s Day Parades throughout the county – 17 th March	Culture/Heritage
	Siamsa Féile Pádraig - Greystones	Culture/Heritage
April	Wicklow Gardens Festival	Environment
	Wicklow Outdoor Festival	Environment/Sports
	Wicklow Adventure Race	Environment/Sports
	Tinahely Trailwalking Festival	Environment/Sports
May	Wicklow Gardens Festival	Environment
	Wicklow Fleadh	Music - Traditional
	Gourmet Greystones	Food Festival
	Bray Jazz Festival	Arts-Music
	Wicklow Arts Festival	Arts-Variou
	Scéip an tSamhraidh - Bray	Culture/Heritage
	Bray Churches Together Festival	Culture
	Bealtaine Festival	Arts-Celebrating Old Age

June	Wicklow Gardens Festival	Environment
	Bray Arcadia Festival	Culture/Heritage
	Synge Summer School	Arts – heritage
	Wicklow 200	Sports
	Wicklow Sail Fest	Sports – General
	Kilcoole Family Summerfest	Community - General
	Round Ireland Yacht Race	Sports
	Dunlavin Festival of the Arts	Arts
	Lacken Hillbilly Tractor Festival	Community
	Music under the Mountains	Arts-Music
July	Wicklow Garden Festival	Environment
	Enchanted Garden Festival	Environment
	Bray Summerfest	Community-General
	Arklow Seabreeze Festival	Community-General
	Knockanstockon Music Festival	Arts-Music
	Americana & Roots Festival	Arts – Music
August	Wicklow Gardens Festival	Environment
	Tinahely Agricultural Show	Community-Environment
	King of Greystones	Sports
	County Heritage Week	Culture-Heritage
	Arklow Maritime Festival	Sports-Heritage
September	Wicklow Gardens Festival	Environment
	Older Persons Sports Fest	Sports-Celebrating Old Age
	Culture Night	Arts – All genre
	Music Under the Mountains	Community-Arts
	Positive Ageing Week	Community – Cel. Old Age
October	Footfalls Walking Festival	Environment-Sports
December	Wicklow Christmas Festival	Community - General



The Arts in Wicklow: County Wicklow has a rich artistic and cultural tradition, with a range of vibrant activities taking place in the visual arts, music, theatre, literature, sculpture, youth arts, community arts and festivals. Wicklow County Arts Office nurtures and develops this rich tradition and ensures that the arts are made accessible to all in the county. The services of the Arts Office include consultation with groups, coordination of projects, administration of projects, sponsorship of groups and information dissemination.

The main areas of focus in the five year arts strategy 2008-2012 is the following:

Creative Practitioner	It is a policy to support practitioners of various artforms including visual arts, dance, theatre, literature, music, film and collaborative arts. Sustaining and developing a career as a creative practitioner and solely generating an income from creative practice, is challenging and something that most professionals aspire to. Wicklow has a role through the Arts Office to support and nurture both the individual practitioner and those working in collaboration
Infrastructure	At present there are four theatres in Wicklow & many other performance spaces. Improved dialogue internally within the local arts office and externally with those planning new or running existing arts venues has lead to an overarching strategic approach to the inclusion of arts infrastructure in new developments, ensuring the appropriate integration of arts spaces in various contexts
Youth Arts	Extensive measures have been undertaken to enhance and develop high quality initiatives for young people. The result has been that young people have participated and engaged with artists in a number of different ways. The Arts Office designed and delivered a number of successful initiatives in the areas of film, theatre, and visual arts, which provided a structured platform for the support of young people's participation in the arts. The role of the young person in being an author in the art making process was central to the experience
Arts in the Public Realm	This relates to Wicklow Arts Office support of arts practices which specifically engage communities and audiences, predominantly outside of traditional arts venues and spaces. These have included activities in a variety of community contexts, which may be associated with a Festival or an existing programme.
Public Arts	Wicklow County Council's Per Cent for Art Commissioning Programme supported eight new commissions which facilitated a range of artistic expressions, taking a broader approach to commissioning work than had been traditionally adopted in the County. In addition several other one off commissions took place reflecting a similar ethos and creating new work in a variety of mediums and contexts. This acted as an important springboard for the development of new procedures and improved administrative practices of public art commissioning within Wicklow Local Authorities. These include the pooling of commission funds, an education and training programme, the appointment of a Public Art Administrator for the Programme, and the establishment of a Public Art Working Group with external artistic expertise.

Table 5 : Five Year Arts Strategy

Filming in Wicklow : The County Wicklow Film Commission was set up in 1992 and is the longest running film commission in Ireland with a full time officer to promote and develop the film industry in Wicklow. The County is renowned as a film location and as the Actress Jane Seymour said *"Welcome to the Hollywood of Europe"* (Jane Seymour, 2000). This results in county wide participation by the community, as extras or benefiting from the economic advantages in film productions from 'Braveheart' and 'Excaliber' to the film currently in production 'The Vikings'

Wicklow has two Film Studios – The Ardmore Studios in Bray and the recently opened state of the art studios in Ashford – Ballyhenery Studios. Situated on 350 acres close the M11, Ballyhenery Studios, is using the latest technologies to keep energy costs in check, is a open stop shop for film production, containing three stages the largest at 25,000 square ft, with the other two each measuring 13,500 square ft, a 250 seater restaurant, dressing rooms, offices spaces, prop shops and workshop spaces. Joe O’Connell, owner of the studios & living in Ashford said in a recent newspaper article *“I want Ireland to become the destination of choice outside of LA”*



This is the Worlds 1st fully integrated film studio which puts the studios literally metres from each other. Thereby, making the design extremely user friendly and dramatically reducing production costs.



Music Generation: Wicklow is a recipient of the Music Generation Funds (Funded by the band U2). Over the next three years over 1,500 children and young people throughout the county will have increased access to music through a variety of programmes including:

- three new vocal tuition main hubs in Co Wicklow,
- access to instruments,
- music foundation courses and school choir projects that target rurally isolated schools
- Opportunities for young musicians to interact with high quality national and international musicians

This will broaden access to high quality education, diminish the cost for children and young people and championing music education as a tool for creative, intellectual and social development of young people – these are among many of the aims of Music Generation Wicklow

Environmental Best Practice



3. Environmental Best Practice

Due to the topography of Wicklow, as stated previously, the relationship between the community and the local authorities is a close and complex one.

The Environment plays a major part in the County Development plan and is at the heart of all policies within the County. The plan forms the reference point for all community interaction with the Local Authorities and its agents on environmental issues. The community participates in the process by been part of the development of the plan through open consultations and submissions; and through organised voluntary groups to ensure that environmental practices are maintained at all times. This is also the blueprint for informed decision in proposed developments and offers individuals a reference point of basic standards that must be adhered to.

INFRASTRUCTURE	<i>Public transport – including the Rural Transport Initiative</i>
	<i>Cycling & Walking Policies</i>
	<i>Public Roads & Parking</i>
	<i>Ports, Harbours, Marinas & Aviation</i>
	<i>Development Standards</i>
WATER SERVICES	<i>Water framework directive & River Basin Management Plans and groundwater Plans</i>
	<i>Water Supply & Demand</i>
	<i>Waste Water</i>
	<i>Storm & Surface Water</i>
	<i>Flooding</i>
WASTE & ENVIRONMENTAL EMISSIONS	<i>Solid waste management</i>
	<i>Hazardous waste & emissions</i>
	<i>Litter & Illegal Dumping</i>
	<i>Emissions to air</i>
	<i>Noise pollution</i>
	<i>Light pollution</i>
ENERGY & COMMUNICATIONS	<i>National Government Policies on Climate, Climate change strategy, Wind energy, telecommunication policies & National Planning & Development Act (amended)</i>
	<i>Policies on electricity generation through wind, solar, hydro, Bio and small scale renewable energy generation</i>
	<i>Transport</i>
	<i>Heating</i>
TELECOMMUNICATIONS	
DESIGN STANDARDS FOR IMPROVING ENERGY EFFICIENCY	<i>Mast & Telecommunications Development standards</i>

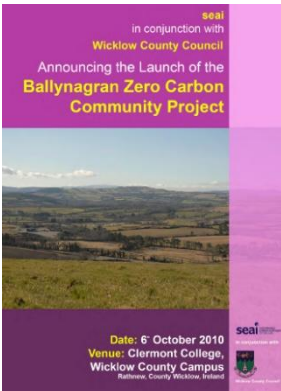
Table 6 : Environmental written policies within the County Development Plan

Environmental awareness grants: Environment groups interested in raising environmental awareness in communities across County Wicklow benefit from funding for the Local Agenda 21 Environmental Partnership Fund. Grants under the fund pay for a maximum of 60 percent of the costs of a project. The remaining costs are met by the applicant group or other sources. Wicklow County Council and the department each provides half of the fund. This year the range of themes which qualify for funding has been extended to include climate change and biodiversity as well as waste management. The fund offers a great opportunity for local groups to undertake an awareness raising initiative in their community.

One of the successful projects from last year involved a linkup between Donard National School and the local branch of the ICA (Irish Countrywomen Association) Members of the ICA have been working with the pupils demonstrating methods of waste prevention through fun activities such as patchwork quilting with scrap fabrics, jam making and mushroom forays. The project incorporates all that is best in Local Agenda 21 projects bringing different sections of the community together to share skills and raise awareness about the environment,



Blue Flag Beaches – Wicklow boasts three blue flag beaches in Greystones, Brittas Bay North and Brittas Bay South



Ballynagran Landfill Community Liaison Committee & Grant Scheme

This schemes were established by Wicklow County Council and the Ballynagran Landfill Community Liaison Committee in 2010 to develop & encourage environmentally sensitive practices from proceeds of the levy on the Ballynagran Landfill Facility.

The Ballynagran Community Liaison Committee meet regularly and members consist of the following; Councillor Representation, Landfill operator representation, Planning Authority representation and Local Representatives. The Projects and Works Grant Scheme provides financial assistance to community based clubs and voluntary organisations for the

development of environmental community projects and works in the locality of the landfill. To date €684,379 has been committed in grant-aid under this scheme. The community are working together to become Wicklow’s first zero carbon community by 2016

1	Smarter Travel Transport Strategy	Anticipated Cost	Community Grant
1.1	Electric Charging points including promotional activities	€7250	€4250
1.2	Nature Trail Study including design of signage family, complete costing, all necessary permissions, consultation and promotion	€27,000	€21,500
1.3	Heritage trail study including design of signage family, complete costing, all necessary permissions, consultation and promotion	€13,000	€10,250
1.4	Footpath Study Glenealy to Rathnew	€3650	€2750
2	Local Food Strategy		
2.1	Support for Local farmer market, facilitation of food network and promotional activities	15,950	€13,000
2.2	Establishment of organic horticulture course and community garden	74,019	32,019
3	Energy Saving Strategy		
3.1	Pilot scheme with power consumption and analysis meter to be networked to central database	16,500	13,000
4	Energy Production Strategy		
4.1	Community Woodland Scheme	125,000	100,000
4.2	Community Wind Farm feasibility study	28,750	22,750

Table 7 : Examples of projects obtaining funding in 2012 include the following:

Environmental Building regulations

Wicklow now has strict building guidelines and require all new buildings during the design process to incorporate sustainable technologies capable of achieving a Building Energy Rating in accordance with the provisions S.I. No. 666 of 2006 European Communities (Energy Performance of Buildings) Regulations 2006;

All new buildings will be required to incorporate water saving measures. This may include rain water harvesting for internal service uses. In particular, all new dwellings with individual surface water collection systems will be required to be provided with water butts; all buildings will be required to be provided with a suitable area on site for the keeping of waste storage receptacles for mixed dry recyclables, organic waste (composters) and residual waste.

In apartment developments, this may be in the form of grouped individual bins in car parking areas or a designated waste building; for individual houses with no side or rear lane from the garden to the public road (e.g. mid terrace houses), this may entail a designated, appropriately designed / screened / enclosed area to the front of the house; Consideration must be given in the design of new buildings to the provision of green roofs or walls (i.e. roof gardens / planted balconies etc), to aid in both water absorption but also to contribute positively to the environment and visual amenity.

Ballyhenry Film Studios, Ashford – World class standards in environmental construction

- Quadruple and triple glazing throughout
- Workshops innovative design to generate heat from every sq metre of roof sheeting.
- Roof heats internal air through the rows of ridges in roof panels in the same way as rows of pipes in concrete floors provide under floor heating with the exception that this unique method is heated by the sun particularly in spring & autumn.
- Rainwater collected from Roof
- Toilet water feed from roof and springs
- 15 water heater strategically placed throughout the building resulting in:
 - a) Instant water at top, no personal flow loops
 - b) For every 1litre of water that is used, only the exact amount of gas for one litre is used i.e. hot water on demand. This is highly efficient and omits the need for hot water cylinders and runs of copper pipe work.
- Outside lights are all powered by solar and turbines – all internal lights automatic.



The Old Railway Walk Tinahely traverses a section of Woodenbridge to Shillelagh. The Railway Line was closed in 1964.

In 1965, the land ownership was transferred back to the original landowners and gradually this isolated corridor of land was colonised by the adjacent hedgerow species and became closed off from the outside world. In 2005, with the permission of the landowners, a trail was developed by a community group - the Tinahely Area Development Association in co-operation with other local partners. It runs along part of the original train track through pretty farmland, 2.3km in length and the walk has some picnic tables along the way, and a clearly defined path suitable for wheelchairs and sturdy buggies. This is a great example of community spirit.



Blessington Lakes walk – a new community initiative which will see a looped walk from Blessington town centre, right around the lake itself with picnic facilities & water sport facilities. Set in the Wicklow Mountains, the lake covers 500 acres of water and was formed only 50 years ago by the formation of the Poulaphouca dam and hydroelectric station. This has been led by the

community forum in Blessington and funding has been secured for the first stage of the project with match funding from the community itself.



The PURE Mile' is an environmental initiative of The PURE (Protecting Uplands and Rural environments) project which aims to foster a greater appreciation and awareness of our county roadscapes by rewarding and acknowledging local community efforts. Groups nominate a local Mile stretch of road (approx. 1.6 km), which they are willing to keep litter/rubbish free and to manage sensitively.

The competition is all about encouraging them to find out more about their local heritage e.g. the history, wild plants and animals, folklore or traditions associated with the local Mile, and using this information to inform better management. Depending on the Mile, good management may include all or some of the following; trimming hedges (outside of the bird nesting season), repairing stone walls, gates and stiles as needed, keeping drains and ditches in good order, maintaining and enhancing the biodiversity of roadside verges and carrying out litter and rubbish clean-ups. In all cases sensitive and minimal intervention is recommended.

In Miles where very little physical management is required, groups may wish to focus energy on local research, or on initiatives to increase awareness and appreciation of the Mile among the local community.

Community Participation and Empowerment



4. Community Participation & Empowerment

Community Groups play a huge part in the ongoing development of the County and it is recognised that their views, concerns, requirements must be listened to ensure that the County grows in a cohesive way. The perceived Urban/Rural divide could only be changed if concerns etc were listened to and changes implemented. Following extensive consultations with community groups over the period 2007 – 2010, the following concerns and appropriate actions were taken.



Table 8 : Community Consultation process

Action required	Conclusion	Outcome
Accessible Community Based Transport	Rural Transport Scheme set up. 11 Routes covering the entire County offering a bus service to the main towns at least once a week. New daily bus in final planning stage from Wicklow town to Glendalough	* Connecting Communities * Social Inclusion
Youth Support Services Required	Funding now provided for Youth Café's	*3 Youth Café's have been opened with another 2 given the go-ahead
Lack of Information about community & Voluntary Sector	Wicklow Volunteer Bureau Set up	* Comprehensive listing now available of all community groups with up to date info and contact details *A one stop shop for information and support services *Mailing service to all listings available FOC
Integration of new communities/ social isolation	County Wicklow Partnership is in the process of compiling innovative ways to engage with these new communities, as well as with other isolated and voiceless groups & Individuals in the county through community funding initiatives	* Improved social inclusion

Integration of Foreign Nationals	<p>*ARDS (Anti Racism & Diversity Strategy) steering committee set up – communities engaged in a respectful and meaningful way.</p> <p>*Research Training in participatory Learning & Action Methods provided comprehensive sessions with 2 Traveller Women Groups; Chinese Community, Bray African Women, Blessington. Migrant hospitality workers, Polish & Turkish Communities and Direct Provision centre</p>	<p>*Strategy 2009-2011 A recipe for Harmony launched in October 2009</p> <p>*Greater awareness of concerns that will change management policies and procedures going forward.</p> <p>*Unitas set up in Wicklow – Cultural integration project for the Indian Community</p>
Use of Networks	<p>Networks developed and supported - Youth Networks, Local Authority resident’s network; older People’s Network & People with Disabilities Network. County Wicklow Partnership focusing primarily on the above Networks – bringing people together</p>	<p>* effective because it empowered those in the network</p> <p>* Offers participants the facility to share</p>
Cost effective Childcare & Play Facilities	<p>147 Childcare facilities in Wicklow. Free playschool year places available</p> <p>County Play Policy was implemented. The play policy guides Wicklow County Council’s approach to play issues and provides the strategic framework that guides relevant agencies in the provision and development of play opportunities</p>	<p>*attractive play environments.</p> <p>* Neighbourhood spaces, estates, parks, streets, libraries, community centers and sensory gardens, bushes, interesting tree trunks that are as important as dedicated playgrounds.</p>
Employment – Irish Traveller Community	<p>Shuttle Knit Ltd – A Social Economy Project in Wicklow town where Traveller & settled women produce exclusive knitwear</p>	<p>Apart from promoting business enterprise and partnership, Shuttle Knit actively promotes social inclusion and addresses inadequacies experienced by members of the Traveller community. It provides opportunities for people to develop both their academic and work related skills.</p>

Table 9 : Identified community concerns & completed actions

Wicklow Joint Policing Committee



Under the auspices of Wicklow County Council and An Garda Síochána (Irish Police), the Wicklow Joint Policing Committee was established with a remit to provide a forum where the local authority and the senior Garda officer responsible for different areas can meet with local community representatives and others to consult, discuss and make recommendations on matters affecting policing of the area and in particular to keep under review the levels and patterns of crime, disorder and anti-social behaviour occurring and the factors underlying and contributing to it.

Membership of the committee consists of the Chief Superintendent, senior members of the Gardaí, the County Manager, public representatives and representatives from the voluntary community sector. The committee meets four times a year to report on crime affecting the area and to work together to promote public awareness. There are an additional four public meetings per annum where local communities have an opportunity to make their views known and ask questions of the members of the committee. A couple of the community initiatives that have been achieved include:-

- Elderly register – A resident can register with the Garda station and should be any problem in the area eg weather etc, they will call the resident and ensure they are ok.
- A Crime prevention officer is available to everyone who will call to their home and carry out a free audit of security features.

Community Groups in Wicklow – Wicklow has community groups covering every conceivable

Type of Organisation	Number of Groups Countywide	Sample of Organisation
Abuse & Domestic Violence	10	Bray Women's Refuge
Addiction	19	Narcotics anonymous
Agriculture	4	Macra na Feirme Baltinglass
Animal Welfare	6	Bray Harbour Swan Sanctuary
Arklow Social Inclusion Network	19	Arklow Polish & Mid European Society
Arts & Culture	84	Bray Signal Arts Center
Campaigning & Awareness Group	24	Comhairle na n'Óg
Community Centers & Family Resource	21	Brockagh Resource Center
Community Development Programmes	8	Bray Traveller Comm. Dev. Group
Disability	47	Bray Lakers
Environment	27	Delgany & District Horticultural Society
Family	47	Bethany Bereavement Support - Kilquade
Finance	5	MABS Arklow

Health & Medical	28	Irish Red Cross - Arklow
Helplines	20	G.R.O.W. Bray
Older People	38	Donard Friendship Club
Recreation & Social	152	Lonra traditional Music Group Blessington
Rescue	6	Greystones Coastguard
Religious Groups	36	Newcastle Presbyterian Church
Residential Care and Homelessness	9	Autism Spectrum Disorder Initiative, Ashford
Social Welfare & Community Services	31	Carnew 1 st Responders
Youth	141	Newcastle Foroige Club

Table 10 : Voluntary groups in Wicklow



Strategic Policy Committees: They were introduced in 1999 by the government and provide groundwork for policies to be decided by elected representatives at Council Meetings. There are four SPC's in Wicklow and they are (a) Water & environmental services, (b)Housing, (c)Community, cultural & Social Development (d) Planning. Community representatives play a vital role on these committees and their role can be best described as a quote from the Minister upon their implementation...

“Local government should be about local people and their elected representatives shaping their own future together. The Strategic Policy Committee structures afford both the elected representatives and local sectoral interests the opportunity to be more involved in policy formulation, in a spirit of partnership, for the benefit of their community. Services that are to be delivered and administered must be strategically planned and the SPCs give both the councillor and community a strengthened role in this regard.”



There are five Comhairle na nÓg or Youth Councils in Co. Wicklow. Each one acts as a place where young people (aged 12-18) can discuss matters of importance to them, and seek to influence local policies and services. Each Youth Council meets monthly, and has formal links with the local Town Council.

Each Youth Council elects young people to the County Comhairle na nÓg which meets monthly in Wicklow County Council Chamber. The County Comhairle elects young people to represent Wicklow at Dáil na nÓg. Youth Councillors also sit on Community and Social Development Strategic Policy Committee, the Sports Partnership, Joint Policing Committees and other adult decision making bodies

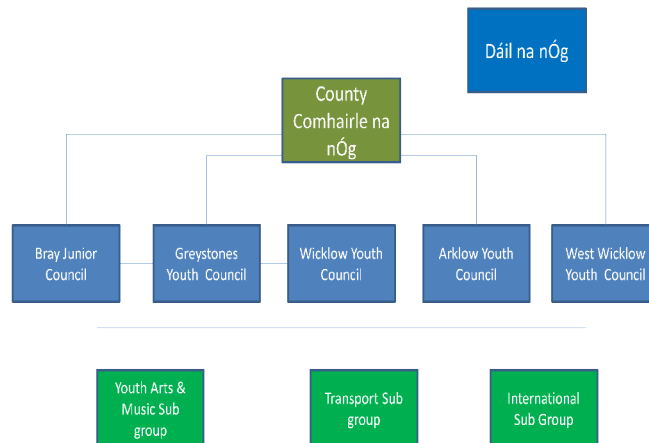


Table : Make up of Comhairle na nÓg



Wicklow Mayor Signing the Youth Charter

Network of Older Persons: The Core value of the County Wicklow Network for Older people is one of equality and inclusion for all older people. Membership is open to all organisations and individuals committed to improving the quality of life of older people in the County. Run by older people for older people. They are working towards building confidence in the network and for to achieve results on the ground by taking on realistic and achievable projects and thus build the foundations for an age-friendly society in County Wicklow The overarching aim of the Network is to develop as an organisation that speaks for and lobbies on behalf of Older People in County Wicklow.



Co. Wicklow Network for Older People

SPECIAL SUMMER EDITION

A fit start to new committee!

This is a good opportunity to thank the people – over 100 of them – who attended the Co. Wicklow Network for Older People's AGM in the Brookagh Resource Centre on May 26. At our first meeting in Carnew Community Care, the new executive committee appointed its officers to steer the group for the next year (see panel) and I join you in welcoming the new executive and wishing them well.

The AGM was a lively affair, with John Smith outlining the activities of the organisation and its role in providing a voice for older people in County Wicklow. He noted that we had made submissions on number of issues to Government, including the change in Community Supports for Older People and the CDP programmes. The group was also involved in the medical card protests and we are currently drafting a letter addressing the proposed cuts in pensions. The Network was also involved in a number of events around the County to celebrate Bealtaine (see page 5 and 6).

Our guest speakers included Kate Carbery from Age & Opportunity and Kevin Brady from the HSE. Kate Carbery expressed Age & Opportunity's delight at being able to fund the Co. Wicklow Network for Older People under its Get Vocal programme. This programme aims to assist groups to provide a 'voice' for older people, encouraging and supporting them to advocate on their own behalf collectively and as individuals.

Kevin Brady of the HSE gave an excellent talk on the Fair Deal nursing home scheme and answered a multitude of questions from those

present. Attendees at the AGM expressed their anxiety and fears that fees should affect their family homes. Other issues that arose during the Q&A session were the lack of a free BreastCheck scheme after the age of 64, having to pay doctors' fees for driving licence health checks, a reduction in services under the medical card scheme for older people.

To kick start the coming year, Richard Farrell from Go for Life launched the Fitline Programme in Co. Wicklow. Fitline is a service that supports those who wish to get active by assisting them to put together an exercise plan over the phone. Participants are then supported by weekly phone calls to monitor their progress.

In the meantime, I wish you a fit and healthy summer where our voices are heard loudly and clearly!

Pat O'Toole, Chairman

Co. Wicklow Network for Older People - Executive

Chairperson: Pat O'Toole
Vice chair: Marie Molloy
Treasurer: Margaret O'Toole
Minutes Secretary: Garvan Hickey
PRDs: John Smith, Michael Cogan, Brendan Kincaid, Kathleen Osborne, Maureen Philbbs, Bernadette Tyrrell, James Flynn, Margaret Brady, Brian Schweppe, Phyllis Plant, Mollie Byrne, Sr. Mary Crobbie, Martina Cronin, Aoife Flynn, Eileen Byrnes, Madolisa Kelly, Chrystal Dowd, Anne Kavanagh, Ann Byrne, Tracey Bunyan

Upcoming Events



Co. Wicklow Sports Fest

A Sports Fest will be held on Friday, September 24 in the Brookagh Resource Centre, Laragh. This day will have activities such as dancing, yoga, Go for Life, Rolling & Bowling/Pitching & Tossing, Fitwalk and also information and networking activities.

The Co. Wicklow Network for Older People and the Wicklow Local Sports Partnership will also be promoting small funding opportunities for groups who wish to 'try out' some sporting activities in their area. Information on funding available for sporting activities for older people will also be available on the day. Watch out in the local papers for further details of this event in August.

The Sports Fest is being funded through monies received from the 2010 European Year for Combating Poverty and Social Exclusion.

Seminar

In the autumn, County Wicklow Network for Older People will hold a seminar bringing together as many representatives of older people as possible. One of the main themes for this event will be advocacy and lobbying and how the Network can represent the views and issues of older people in Wicklow through being a voice for them and lobbying on their behalf. The Network has invited Aine Brady, TD, Minister for Older People and Health Promotion, to open the event. Further details will be included in the Autumn issue of our newsletter and in local newspapers.

Positive Ageing Week

Changing the lives of older people by empowering them. Positive Ageing Week 2010 will run from September 24 to October 2 and is organised and supported nationally by Age Action Ireland.

The week is about creating a society in which people of all ages enjoy the same status and rights. It aims to tackle negative views of ageing and to emphasise the positive aspects that ageing holds for people. It is a celebration of the fact that people are living longer and that ageing is an opportunity and not a burden.

In Co. Wicklow, Arklow has been selected to be a Positive Ageing Week Town and an exciting programme of events and activities will promote interaction between the differing age groups in the community.

On a countywide level it is hoped to have a social evening in the Brookagh Resource Centre, Laragh on Thursday, September 23, to celebrate Positive Ageing. Watch local press for details. To enable people to stay in the area and participate in the Co. Wicklow Sports Fest the next day, the County Wicklow Network for Older People is confident of negotiating a deal with local hotels in Glendalough. Watch out in the local press for details. For more information on Positive Ageing Week, visit www.ageaction.ie.





Excerpts from the Summer Newsletter 2012 for the Network of Older People

Co Wicklow Partnership Local & Community Development Plan, 2011 – 2013

County Wicklow Partnership (CWP) was formed in 2009 and the work of the company is carried out through a series of publicly funded programmes and projects. The company did indebt research into the profile and needs of the county and as a result a comprehensive and detailed strategic plan has been published covering the following areas:-

Composite Area Profile : Social economic profile : Demographic profile : Statutory & community sector service provision profile

CWP adopted a mixed method approach and gathered data using both qualitative and quantitative methods. Secondary data was obtained by examining the Pobal small area maps (www.pobalmaps.ie) in order to provide detailed information on the areas experiencing the highest levels of deprivation in the CWP area. Primary research was conducted through the medium of 'elite' interviews with key statutory agency personnel and focus group meetings. The focus groups were themed under the headings of Unemployment, Disadvantaged Women, Disadvantaged Men, Disadvantaged Youth, Lone Parents and Non Irish Nationals. These took place in locations in Wicklow Town, Rathdrum and Arklow. Each focus group was kept to a maximum of 12 participants.

The outcome in summary was seven key objectives with specific budgets and time frames as follows:

Local Objective 1 :	Increase the awareness, knowledge and uptake of services among the identified priority target groups in identified areas.
Local Objective 2:	To collaborate with other organisations to deliver social inclusion activities in CWP area and to lever funding for these activities.
Local Objective 3:	Increase uptake of formal and informal education for prioritised target groups and areas.
Local Objective 4:	Work with service providers and local communities to increase opportunities for disadvantaged young people in Rathnew, Rathdrum and the priority areas in Wicklow Town to access formal and informal educational activities including developmental youth work provision by 2013.
Local Objective 5:	To develop and sustain a range of pre-employment and employment services to assist the long term unemployed and activation32 clients in CWP area to enter or re-enter the labour market.
Local Objective 6:	To support the long term unemployed and activation clients in the CWP area to establish their own businesses
Local Objective 7:	To build the capacity of individuals drawn from disadvantaged communities and/or communities of interest to enable them to contribute to policy development and decision making.

Table 11 : Key objectives of CWP Local and Community Development Plan, 2011 – 2013

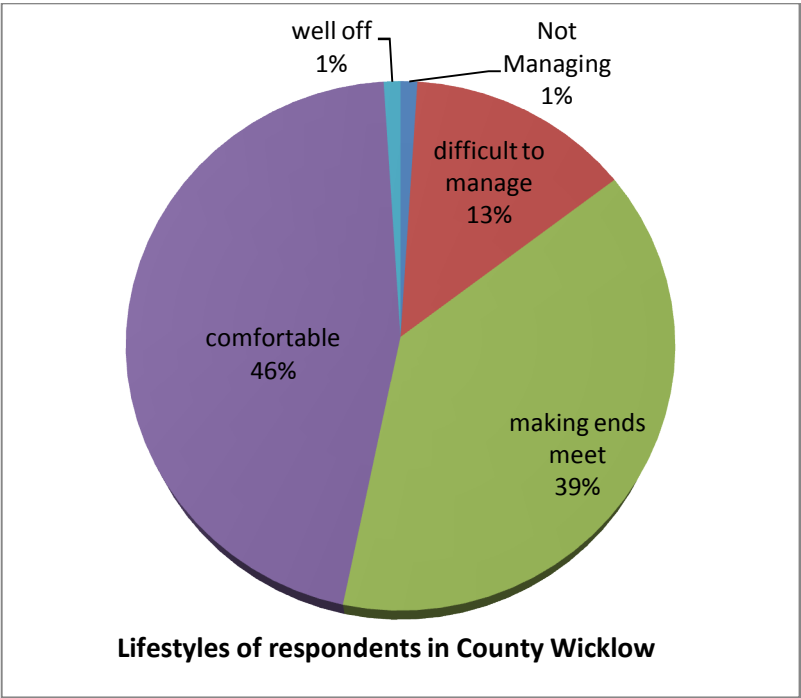
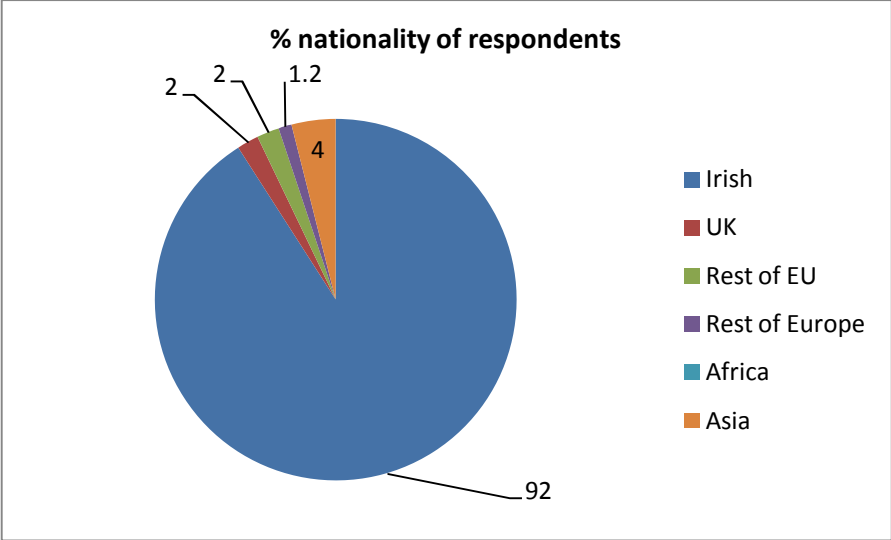
What makes this report significant is that County Wicklow Partnership has an excellent track record in implementing policy strategies and have the resources to implement the full programme as outlined in this forward thinking document – to properly address socio economic disadvantage within Wicklow.

Healthy Lifestyles

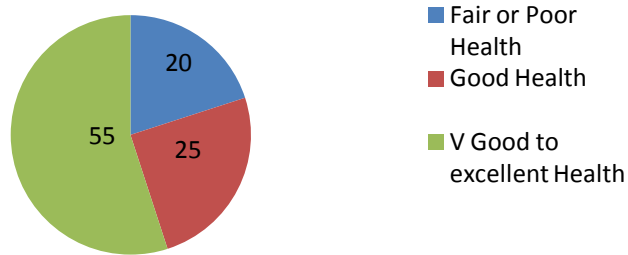


5. Healthy Lifestyles

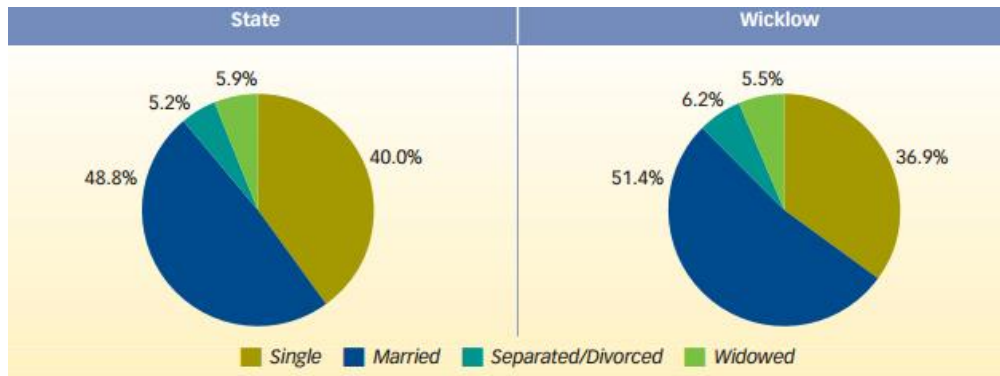
Research has been undertaken into the well being & lifestyles of people in Wicklow and this forms the basis of all health & social strategies for the County. Source: CWP 2011



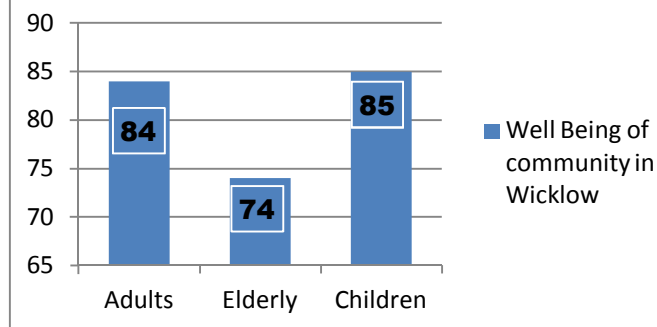
Health of Wicklow Population

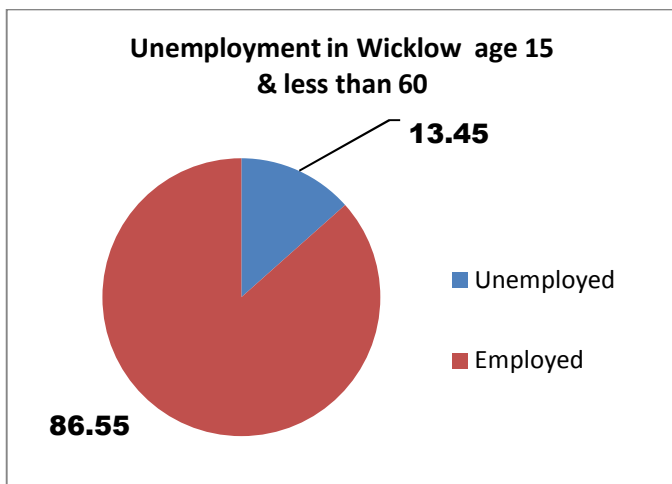


Marital Status of population of Wicklow



Well Being of the Community





Unemployment has risen substantially over the past three years and this is impacting on the lives of the community in Wicklow. Renewed focus has been made on the social economy and a major drive is in force to ensure that this sector, whilst growing is not left behind as part of the well being of the community of Wicklow

Healthy Lifestyles: Whilst there has been no specific data or research done for Wicklow, recent work done by the Irish Heart Foundation has come up with some startling figures about obesity of the population within Ireland.

Prevalence : Obesity is the most common nutritional disorder in the world.

Irish Adults (18 years and over)

- Two out of five Irish adults - 39% (45% of men; 33% of women) are overweight
- One in four - 25% (24% of men; 26% of women) is obese

The trend towards obesity in Ireland is increasing. Between 1990 and 2000 the prevalence of obesity increased by 67% overall, up 1.25 fold in women (from 13%) and up 2.5 fold in men (from 8%) Ireland has the fourth highest prevalence of overweight and obesity in men in the EU and the seventh highest prevalence among women

Irish Children (5-12 years)

- Overweight and obesity is now the most common childhood disorder in Europe
- One in ten 5-12 year olds is overweight and a further one in ten is obese. In total, 22% of 5-12 year olds are overweight or obese.

Irish Teenagers (13-17 years)

- One in five teenagers is overweight or obese (11% overweight and 8% obese)
- There has been a significant increase in teenage obesity since 1990 with an 8-fold increase in males (1% to 8%) and a 2-fold increase in females (3% to 6%)



Taking this into consideration Wicklow has undertaken a pro-active educational programme to healthy eating in conjunction with the HSE and this is a free six week course in diet, cooking, recipes, advise, shopping etc. This has been rolled out to all villages and towns throughout the County.



Who should complete the
Healthy Food Made Easy
Course?

Everyone!!!



Healthy Food Made Easy

How do I find out more?

If you or a group that you are
member of would like to take part in a
Healthy Food Made Easy Course

Contact: Anne Kavanagh

Healthy Food Made Easy Coordinator

Ph: 0402 20955

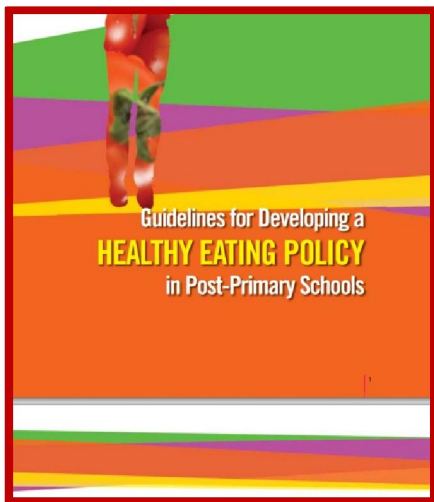
email: healthyfood@wicklowpartnership.ie



A Community Based Nutrition
course delivered by the
Co. Wicklow Partnership in
association with the HSE



Schools Policy: 96% of Wicklow Primary schools have taken on a healthy eating policy – this followed research carried out and concluded that learning is helped with healthy eating in the classroom and across the curriculum .



In Secondary School boards of management across the sector have embraced the Healthy Eating policy document. In addition Wicklow schools have embraced a new national challenge for fitness – a competition amongst secondary schools to increase fitness in students whether active or not.

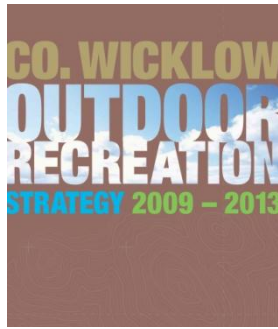
Sports in Wicklow: The people of Wicklow are very proud of the world renowned beautiful landscape in the ‘Garden County’ which opens multiple opportunities for outdoor, adventure and recreational sport. While a lot of hard work is done to maximise these natural resources, it is widely acknowledged that we must never allow ourselves to take any of it for granted and continue to strive for additional facilities for the communities of the county located amongst the community.

Table 12 : TYPES & NUMBERS OF SPORTS FACILITIES IN WICKLOW	
GAA (Gaelic Athletic Association) Hurling & Football, Including playing pitches, changing facilities, indoor halls	37
Sports Complexes, Including indoor community sports halls	4
Cricket Clubs	3
Leisure Centers, Including Gyms & Swimming Pools	13
Adventure Centers, Including Outdoor Recreational Centers	12
Equestrian Centers	12
Bowling Clubs, Including Lawn Bowls	2
Golf Clubs, Including par 3	24
Fishing Facilities Including clubs	17
Rugby Clubs Including playing pitches, changing facilities & Indoor Halls	4
Soccer Clubs	40
Rowing Clubs	4
Tennis Clubs Including courts, changing facilities & Indoor facilities	4
Sailing & Water sports Clubs Including changing facilities & Indoor facilities	4
Croquet Clubs – with playing Fields	1
Cycling Clubs Incl Mountain bike Clubs	6
Martial Arts with indoor facilities	3
Ten Pin Bowling	2
Snooker Clubs	2
Community Playgrounds	15
Athletic track	1

Outdoor Healthy Lifestyles in Wicklow . Wicklow is seen as a hub of sports of every conceivable genre and due to policies within the County, are not preserved for those who can pay with community facilities available in all areas in addition to paid clubs.



Co. Wicklow has a vibrant, sustainable outdoor recreation culture, based on partnership, trust and mutual respect. Five key objectives have been identified for the planning period 2009 – 2013, in the



County Wicklow outdoor recreational strategy that collectively, will help to achieve the agreed vision. These objectives are:

- » Integrated outdoor recreation management.
- » Improving opportunities and facilities for sustainable outdoor recreation.
- » Supporting conservation through outdoor recreation.
- » Promotion, education and raising awareness.
- » Stimulating outdoor recreation tourism and entrepreneurship

Countryside recreation is actively encouraged and applies to those sporting and recreational pursuits based on use of the resources of the countryside and which contribute to healthy active lifestyles. The term Countryside includes land, water and air. The term recreation in this context applies to sporting and Recreational activities, which operate in the countryside as defined above. It does not refer to sporting activities, which take place in the countryside on confined courses or pitches specifically designed and constructed for those - Sports, e.g. golf, football, show jumping etc

Wicklow Mental Health: The Wicklow Mental Health Association is a local voluntary organisation, which aims to promote positive mental health and to actively support persons with a mental illness, their families and carers by identifying their needs and advocating their rights.

All members of **WMHA** work on a voluntary basis in their community to support people with a mental illness and to promote positive mental health. A project aimed at the promotion and nurturing of mental health through reading has been initiated by Wicklow Mental Health Association in conjunction with Wicklow Library Service. A new section has been introduced at Wicklow Library which is dedicated to Mental Health and Well-Being publications.

This new section provides the opportunity for the people of Wicklow to avail of a range of useful self help books in the areas of depression, anxiety, bullying, stress, mindfulness and feeling good. It is planned over time to broaden the range of books provided. These books were purchased by Wicklow Mental Health Association from funds raised in the community which has brought this innovative initiative to fruition.

Wicklow supports a wide ranging health support system and all link into the National Health Service Executive HSE. It would be fair to say that the health of the community of the county would be severely affected without the community support – working with the various agencies and charities.

Community Health Support in Wicklow

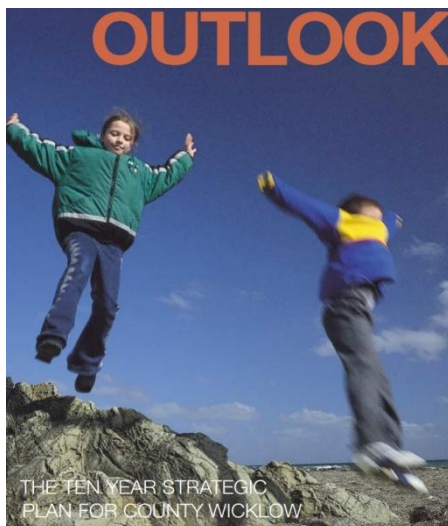
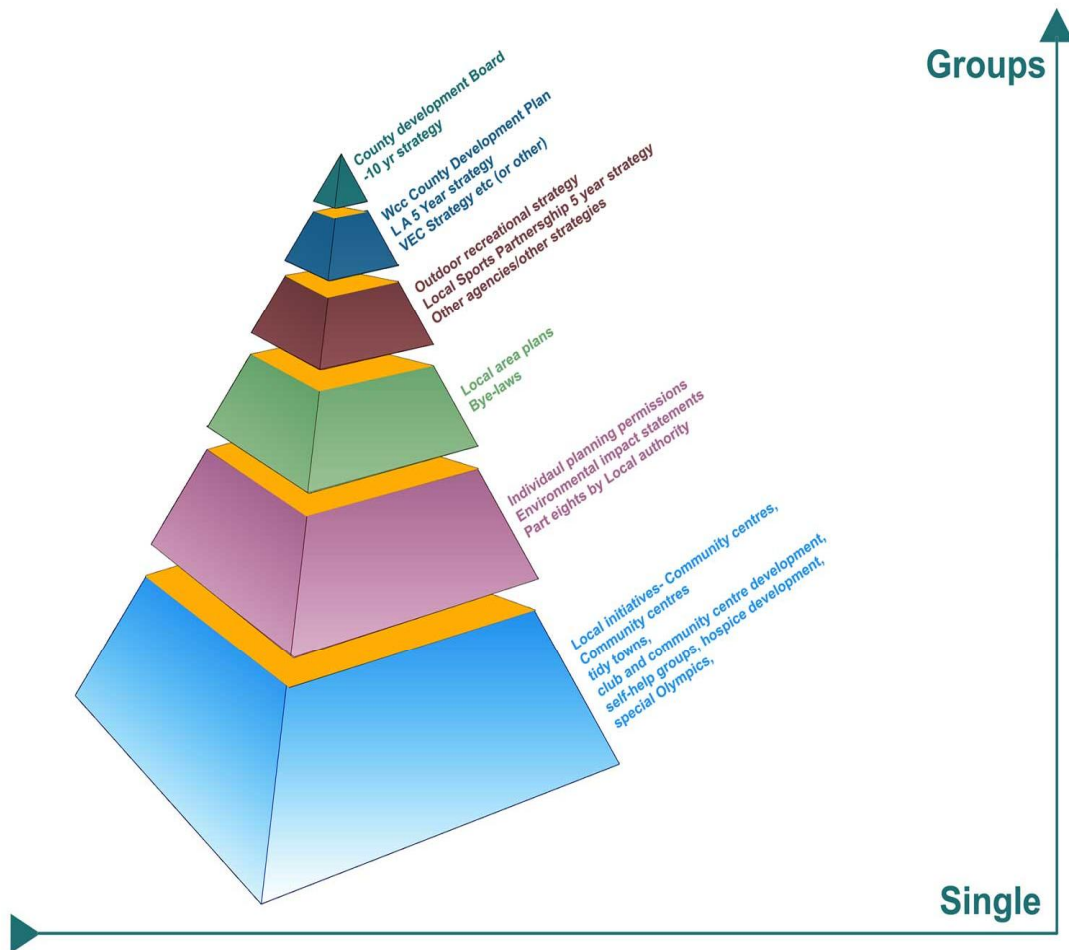


Strategic Planning

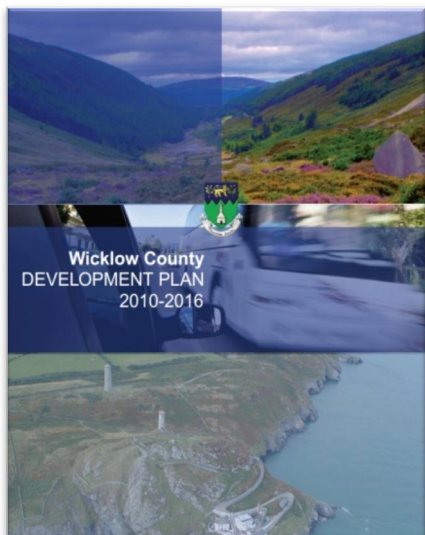


6 : Strategic Planning

Wicklow’s planning stems from a bottom up approach where all tiers of society link into the County Development plan in conjunction with the County Development Boards Outlook Plan – the ten year social, economic and cultural development strategic plan of County Wicklow.



Outlook – the ten year strategic plan for the Social, Economic and Cultural Development of Wicklow



County Development Plan 2010 - 2016 Process

The County Development Plan is the pre-eminent County Document that is central to the management of the County. It sets out an overarching vision, policies, strategies and objectives in the context of a coherent spatial framework that is crafted upon the principles of proper planning and sustainable development. It consists of a written statement and a plan or plans all of which indicate the development objectives of the county.

Members of the community are invited to make submissions, observations and comments on any aspect of the plan. This plan is the master plan of the county and in addition local area plans, whereupon a more detailed set of strategies are

developed for towns and villages based on local criteria. However, these plans must always stay within the objectives of the County Development Plan.

From the start of the planning process it takes approximately two years to review and complete – Therefore work on the next Development Plan will commence in 2014, but it is worth noting that **every** plan that is implemented in the county includes an elaborate public consultation process

Timeframe for the Preparation and Completion of the County Development Plan 2010-2016 Commences 24 months before final publication

Stage 1 Intention to review CDP

Notification of intention to review the plan

Stage 2 First Stage Public Consultation

Submissions received on Issues paper -

Manager's Report on submissions received on Issues Paper

Stage 3 Draft Plan

Draft plan adopted

Notification of public display of draft plan

Stage 4 Second Stage Public Consultation

Submissions received on draft plan

Manager's Report on submissions received on draft plan

Stage 5 Proposed Amendments

Proposed Amendments adopted by Wicklow County Council

Notification of public display of Proposed Amendments

Stage 6 Third Stage Public Consultation

Submissions received on Proposed Amendments

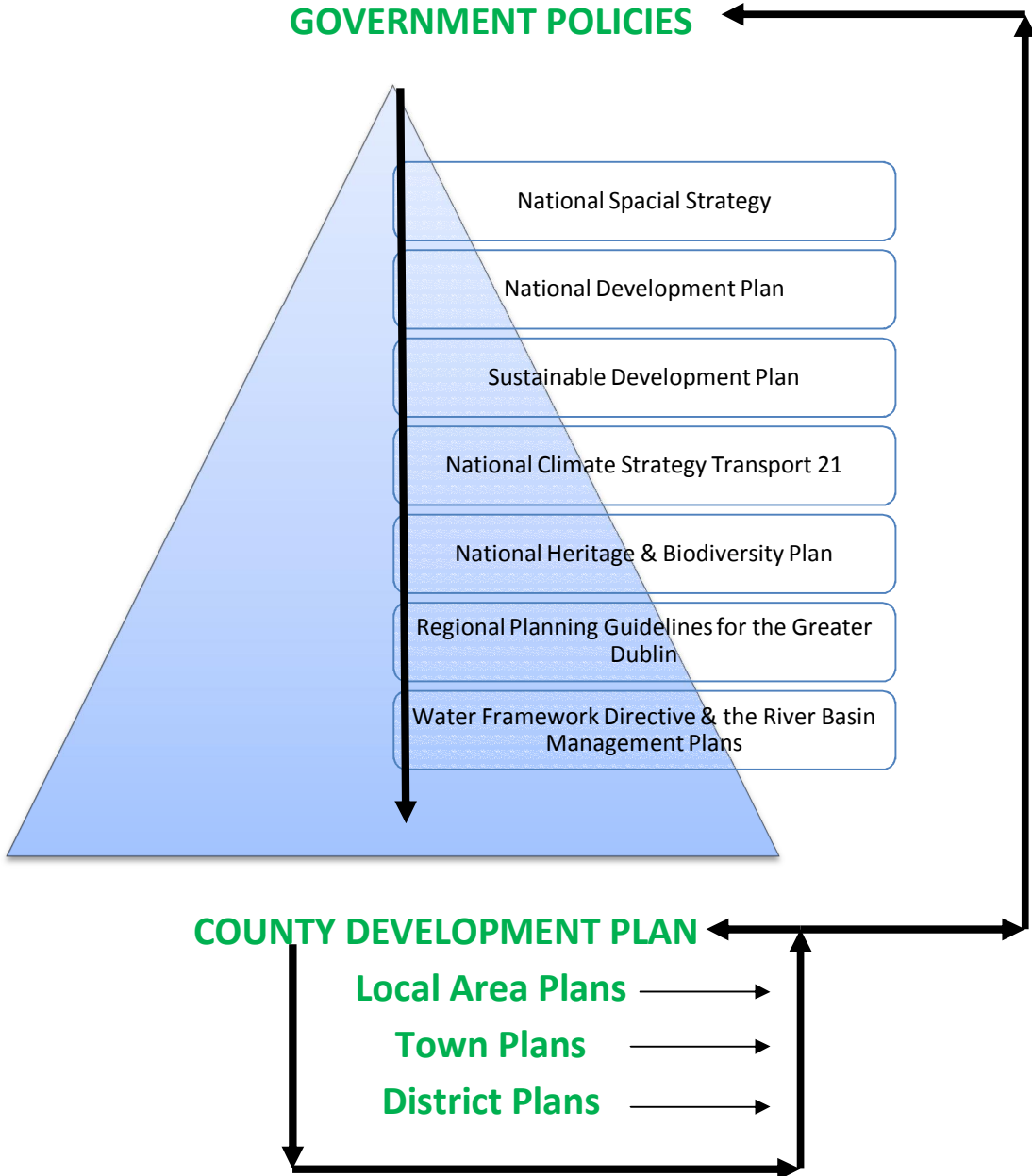
Manager's Report on submissions to the proposed amendments to the Draft Plan

Stage 7 Adopted Plan

Notice of the Adoption of the County Development Plan 2010 - 2016

Adopted County Development Plan 2010 - 2016

Strategic Context of the County Development Plan



Local Plans & other studies including the waste management plan, a number of Local Area Plans and Town Plans and one District Plan have been, and will continue to be prepared and implemented by Wicklow County Council. While these plans must be consistent with the County Development Plan applicable at the time of adoption, the cycle of local plan review during the lifetime of the County Development Plan will form a feedback loop which feeds into and informs the drafting of subsequent County Plans.

Development during difficult times



The **Greystones Harbour Project** is one of the most challenging civil engineering and architectural projects to be undertaken in Ireland over the past number of years. It involves the provisions of a new Harbour and Marina, together with enhanced public and community amenities, backed by residential and retail development.

Greystones Harbour Project is a major Public Private Partnership involving Wicklow County Council and Sispar and is expected to cost in excess of € 300 millions. The Project includes Coastal Protection Works, Upgraded Bray / Greystones Walk, A new Harbour, Provision for a new Coastguard Station, A new Beach Area, A Primary Care Unit, A new improved Public Park, A new Public Boardwalk, 341 Residential Units, New retail facilities including Cafes/Restaurants, 230 Berth Matina.

It also includes new facilities for local sporting clubs

- Greystones Sailing Club
- Greystones Ridge Anglers Club
- Greystones Rowing Club
- Greystones Sea Scouts
- Wicklow Aquanauts

Marina area to be completed 2013



Area for Primary Care Unit

Work commenced in November 2007 at the start of the recession and a world story of financial collapse in the Irish Economy. To

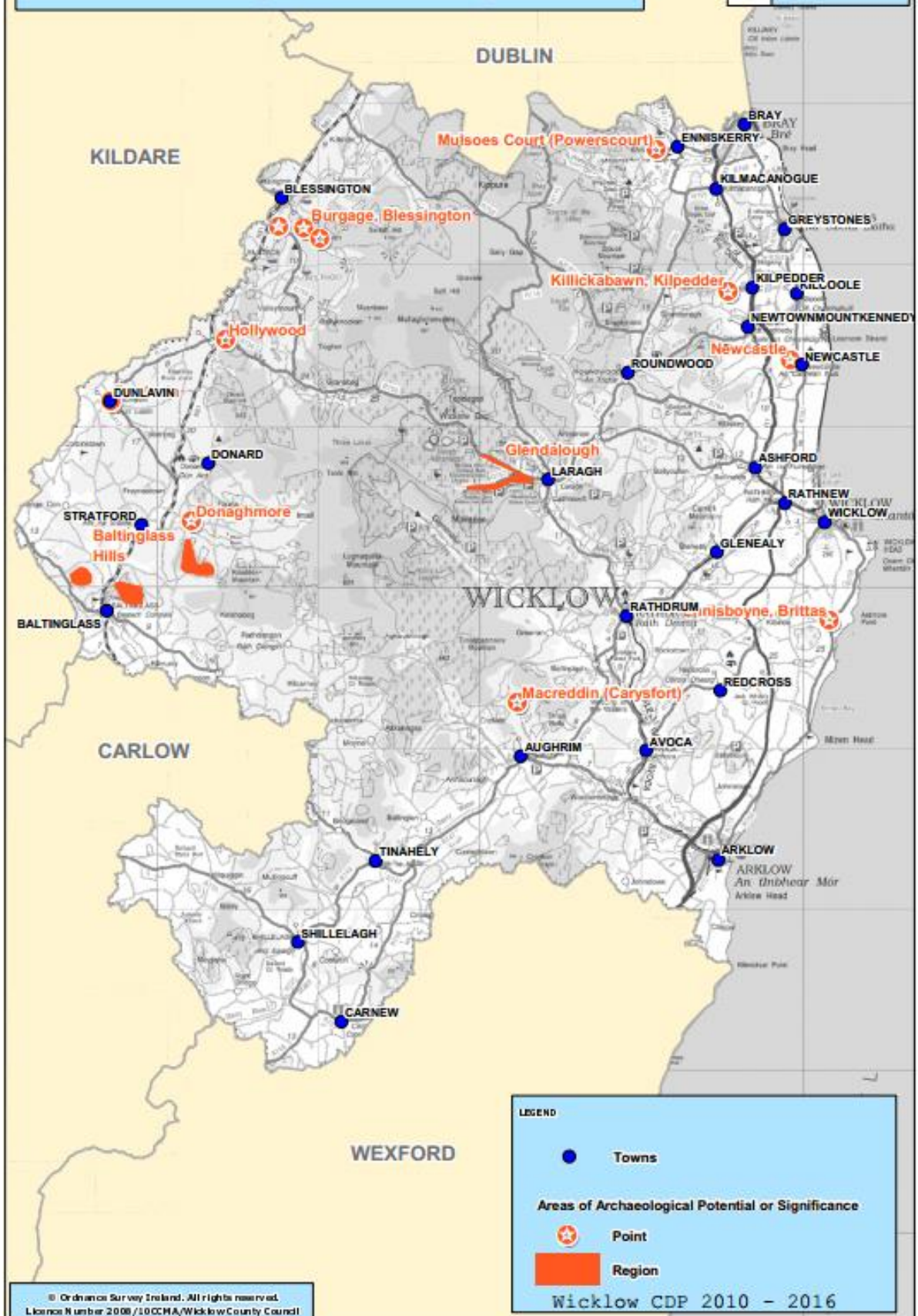
date over €74 million has been spent on the development and at this stage the main harbour works are complete. Harbour Users have full use of the harbour and the developers have put a temporary public space in front of the harbour. However the main landmass for housing development still

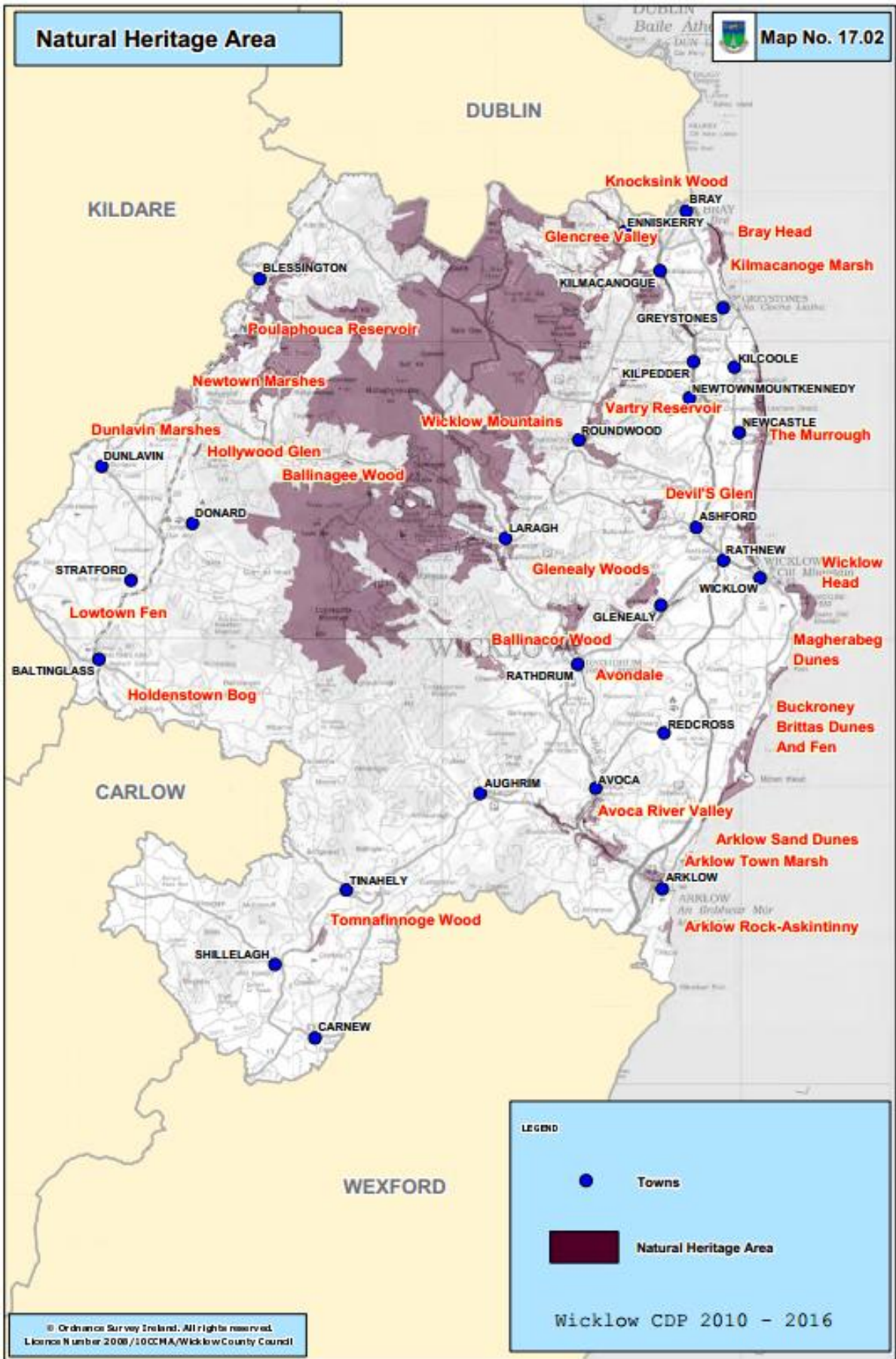
remains un-developed. Through public consultation, the developers have agreed to re-grass the full development (Commenced four weeks ago) until housing development can re-commence. There is much hope that the Marina will open next Spring (2013) and full planning has now been approved for the Primary Care Centre, that will replace the initial planned first block of apartments – Commencement of the PPC will commence in September and will provide superb health care facilities to the community. The development will take a longer time to complete than expected but the community, through consultation have been able to secure facilities in the interim and ensured that the grassing of the area will be aesthetically more pleasing for the community and visitors alike.

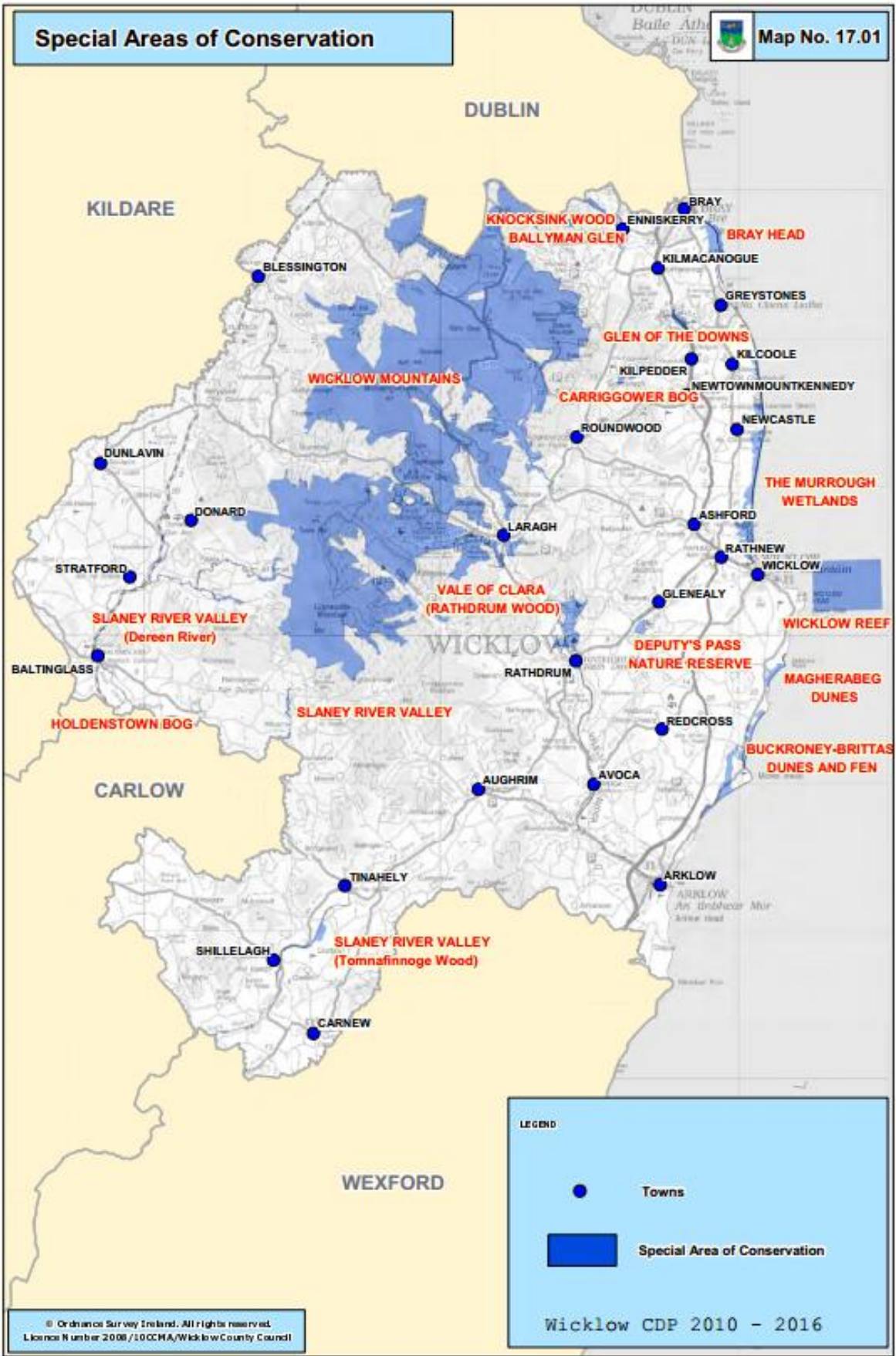


Areas of Archaeological Potential or Significance

Map No. 16.01



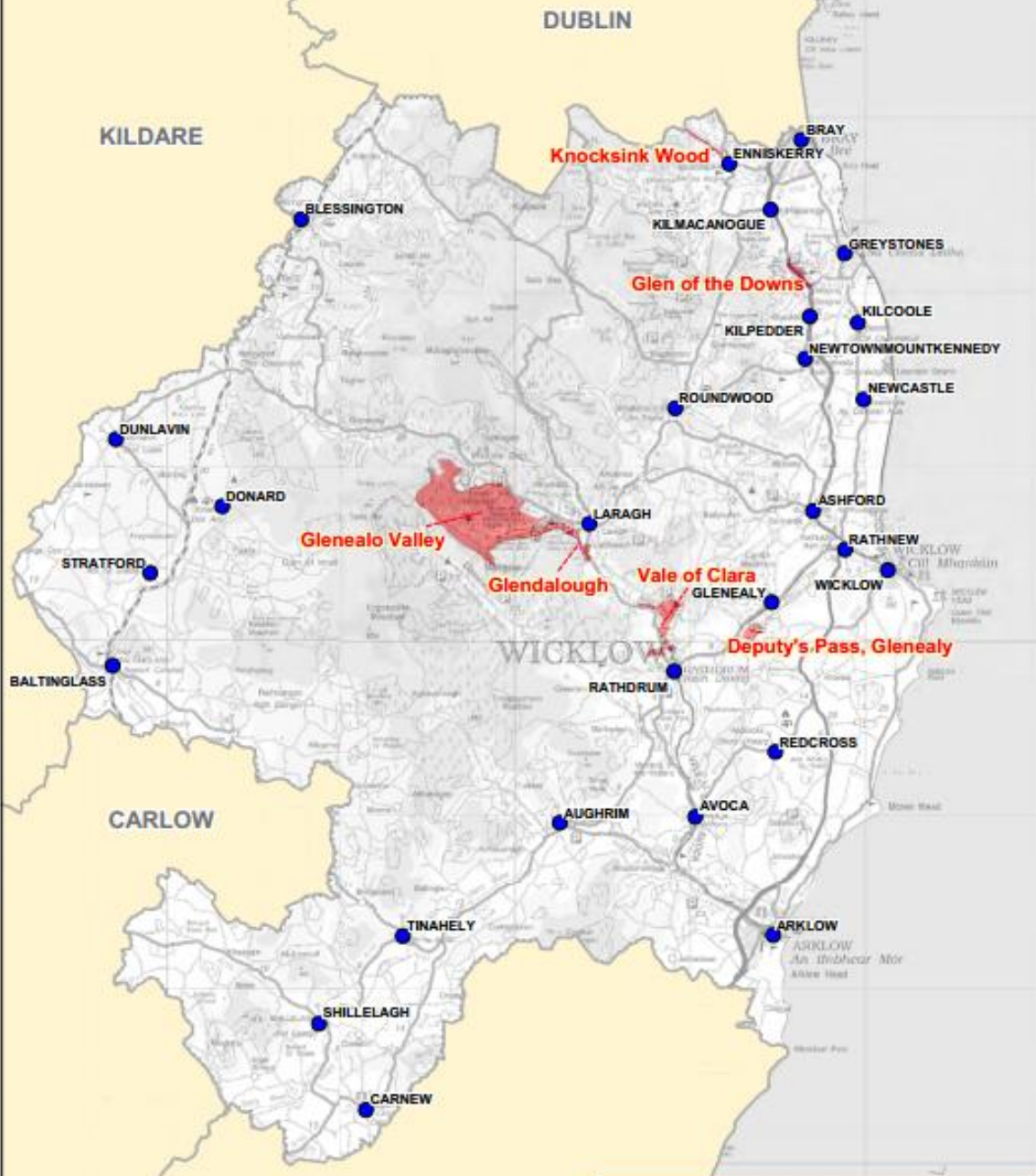




Nature Reserve



Map No. 17.04



LEGEND

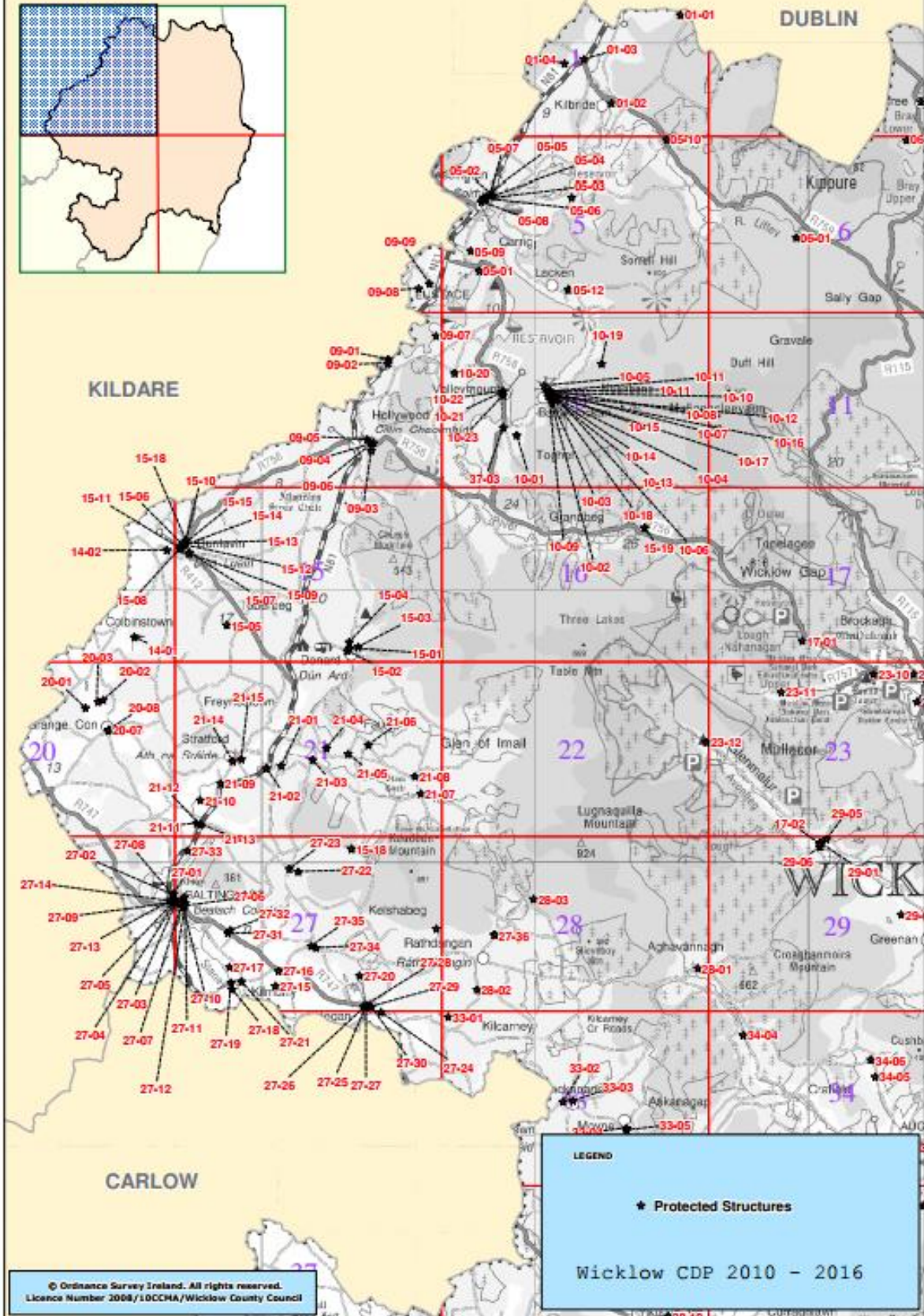
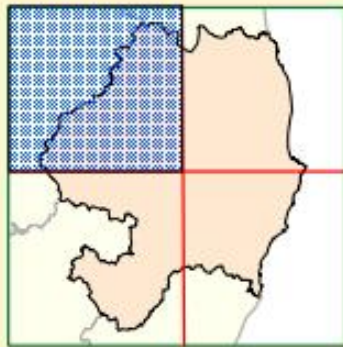
- Towns
- Nature Reserve

Wicklow CDP 2010 - 2016

© Ordnance Survey Ireland. All rights reserved. Licence Number 2008/10004/Wicklow County Council

Record of Protected Structure

Map No. 16.02 A



LEGEND

- ★ Protected Structures

Wicklow CDP 2010 - 2016

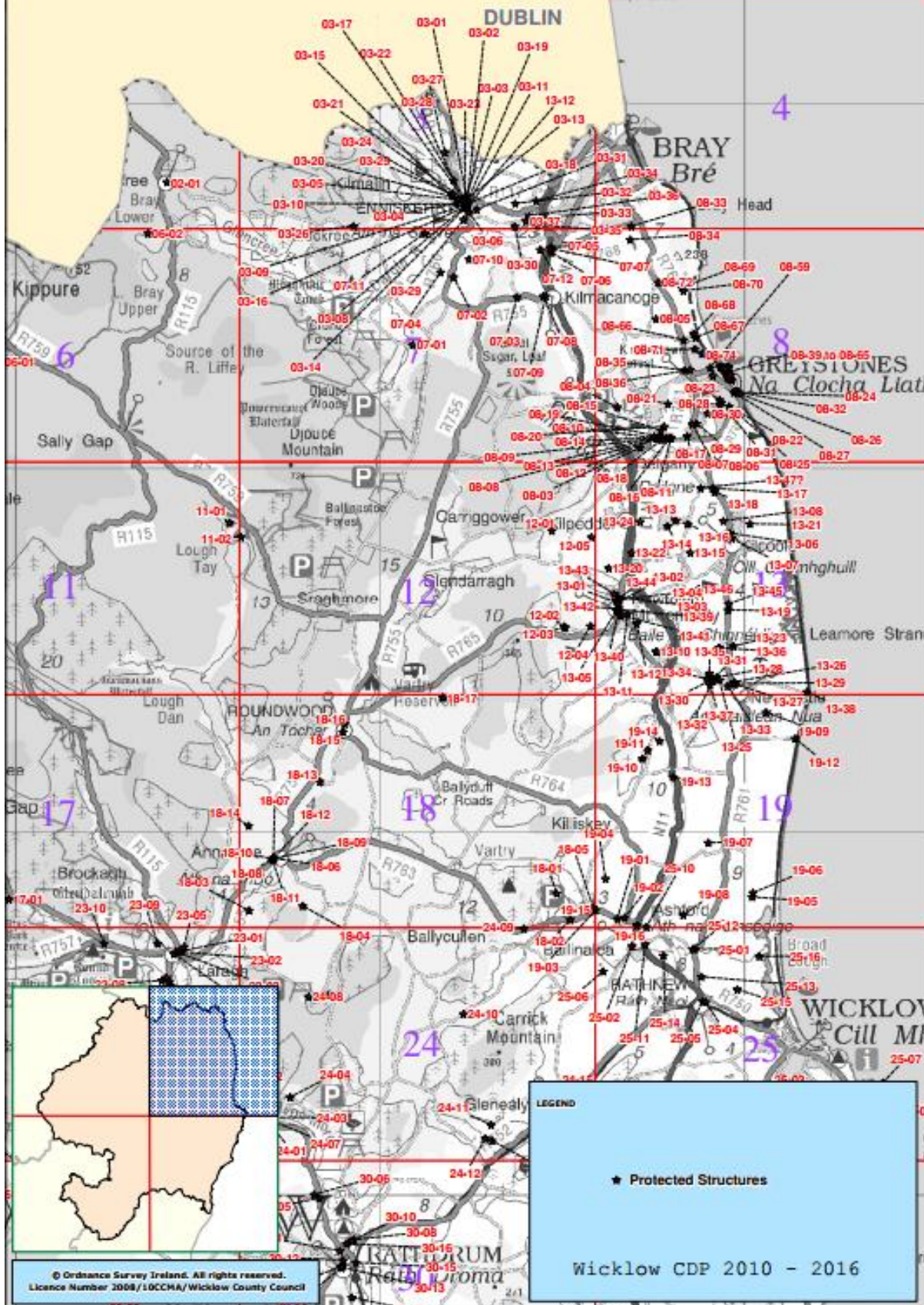
© Ordnance Survey Ireland. All rights reserved.
Licence Number 2008/100CHA/Wicklow County Council

Record of Protected Structure

KILLINEY
Cill Iníon Lé

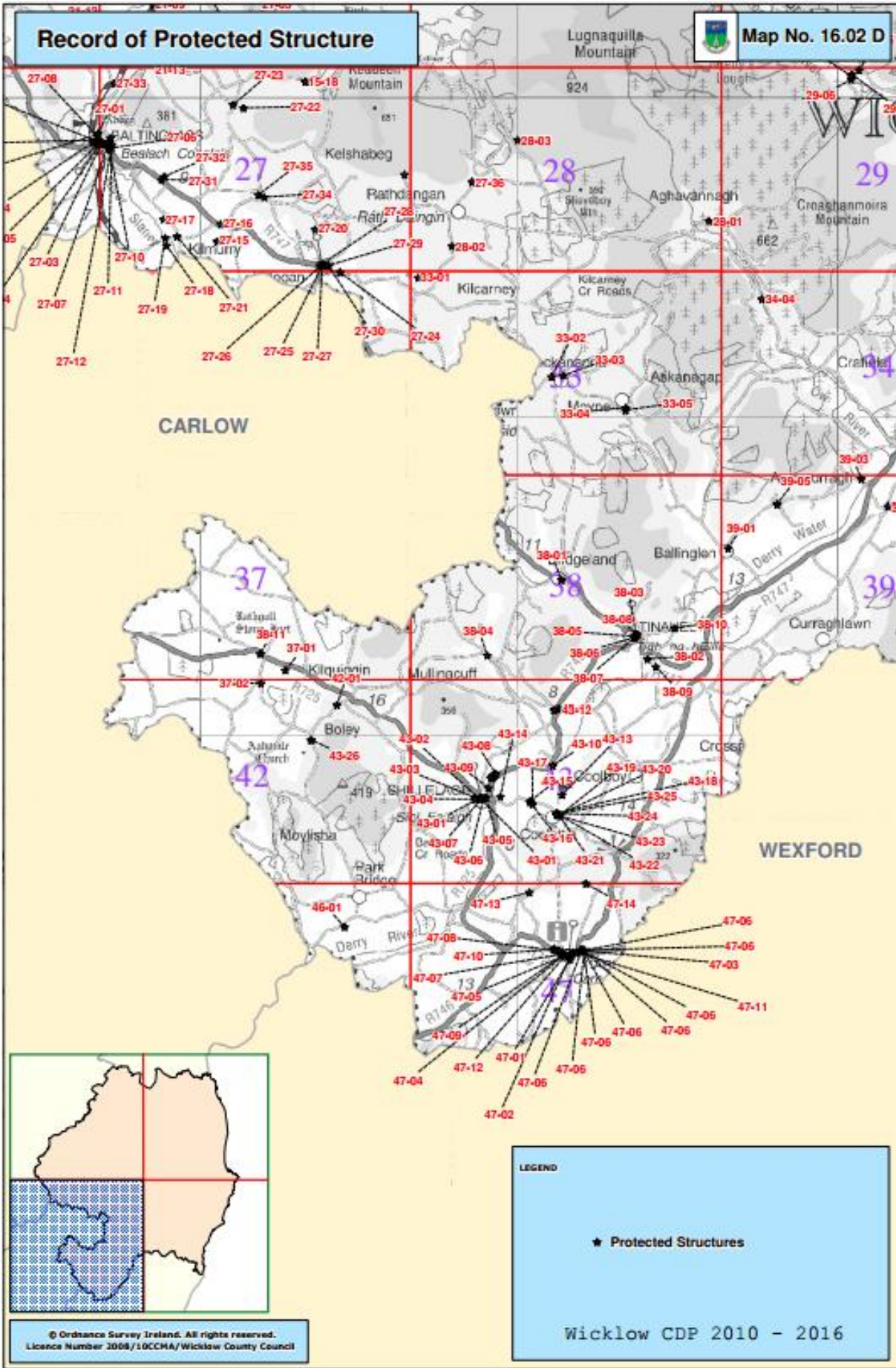


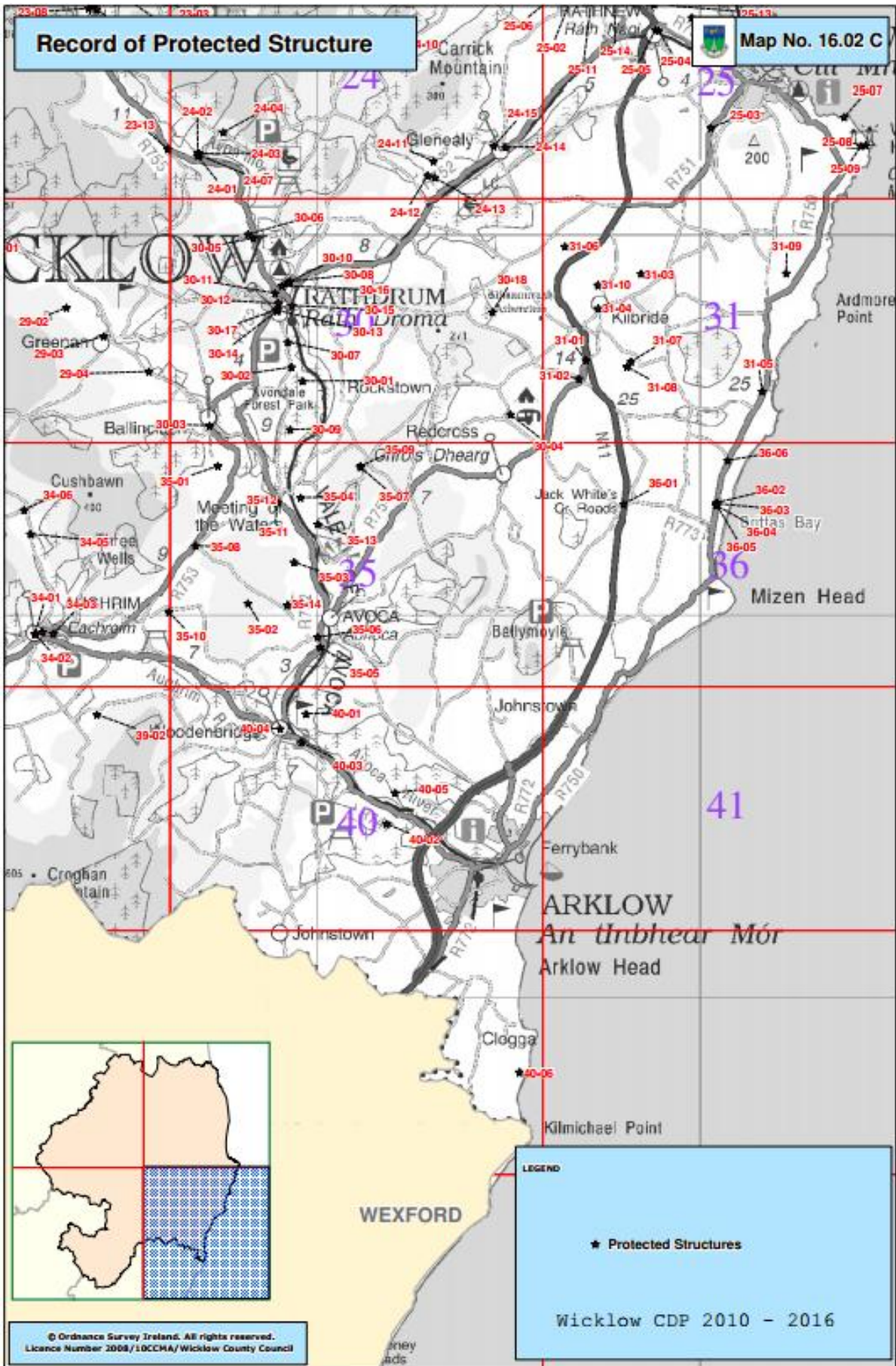
Map No. 16.02 B



© Ordnance Survey Ireland. All rights reserved.
Licence Number 2008/10CCMA/Wicklow County Council

LEGEND
★ Protected Structures
Wicklow CDP 2010 - 2016

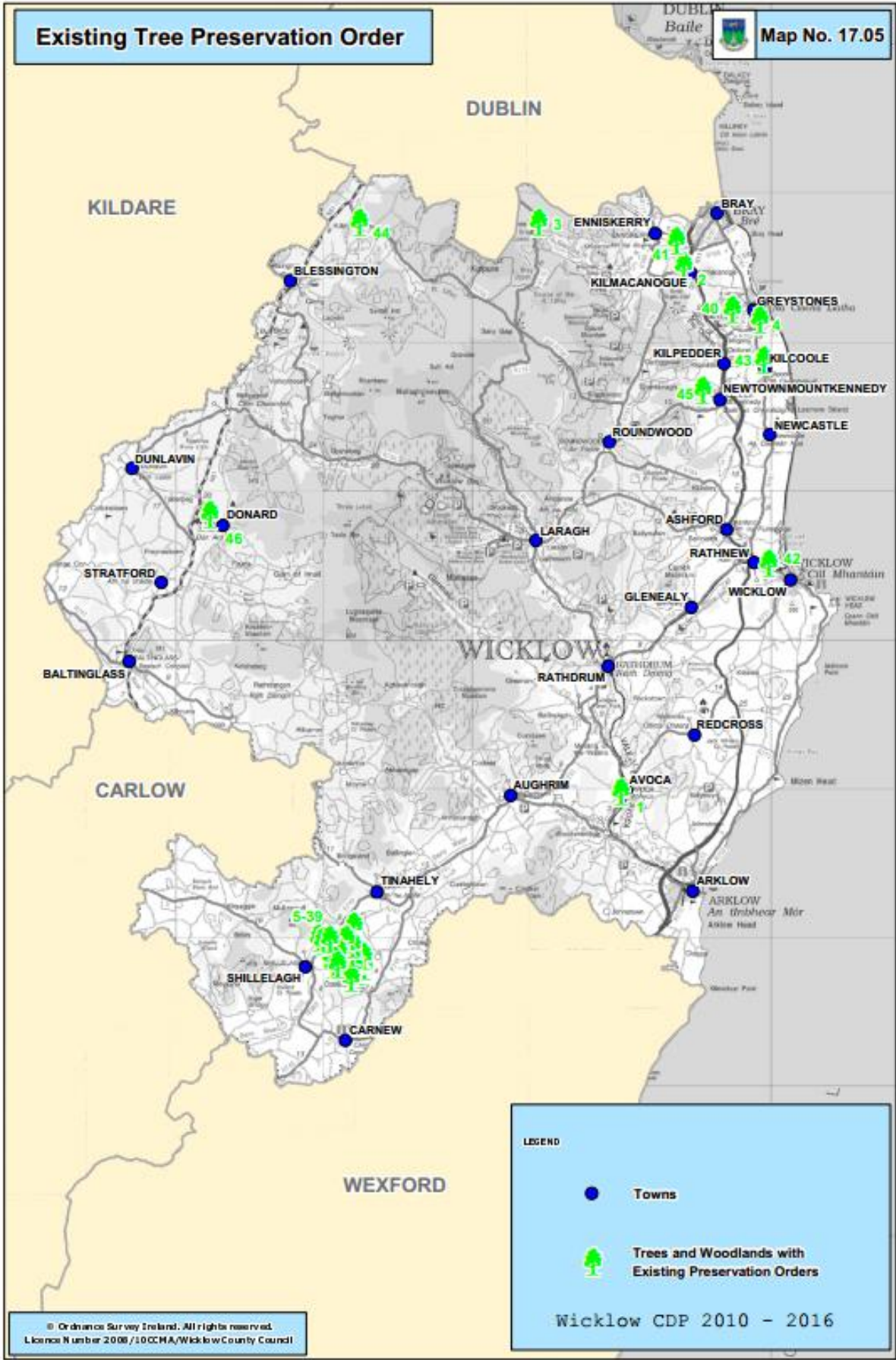




Existing Tree Preservation Order

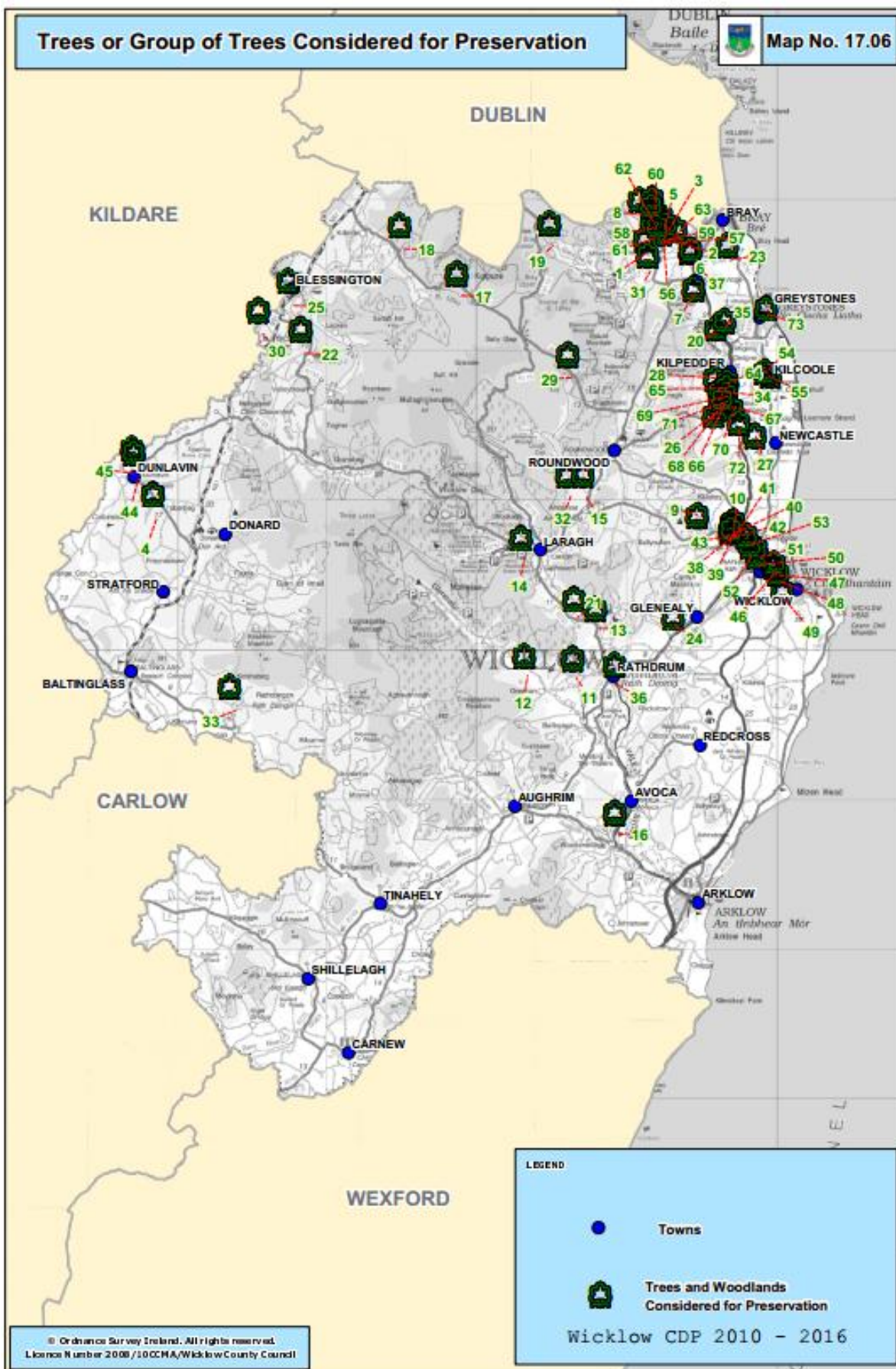


Map No. 17.05

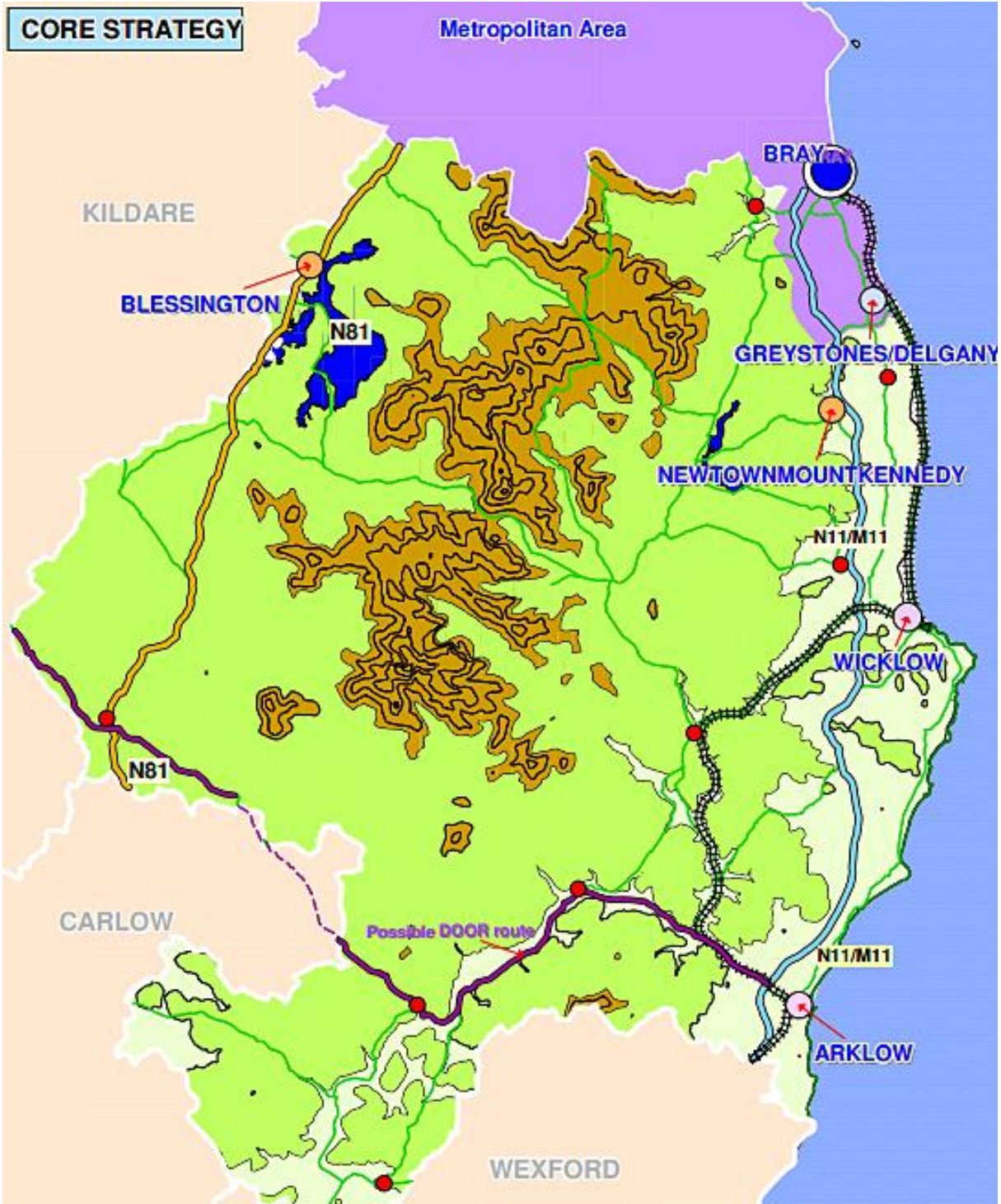


Trees or Group of Trees Considered for Preservation

Map No. 17.06



CORE STRATEGY



	Metropolitan Consolidation Town		Metropolitan Area
	Large Growth Town I		Hinterland
	Large Growth Town II		
	Moderate Sustainable Growth Town		Small Growth Town

	Dublin to Rosslare Railway Line
	N11/M11
	N81
	Possible DOOR route